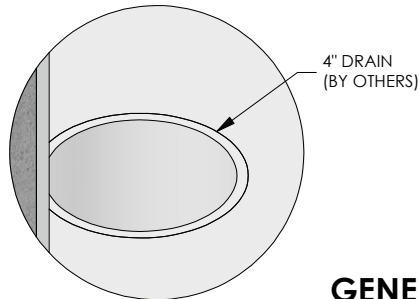
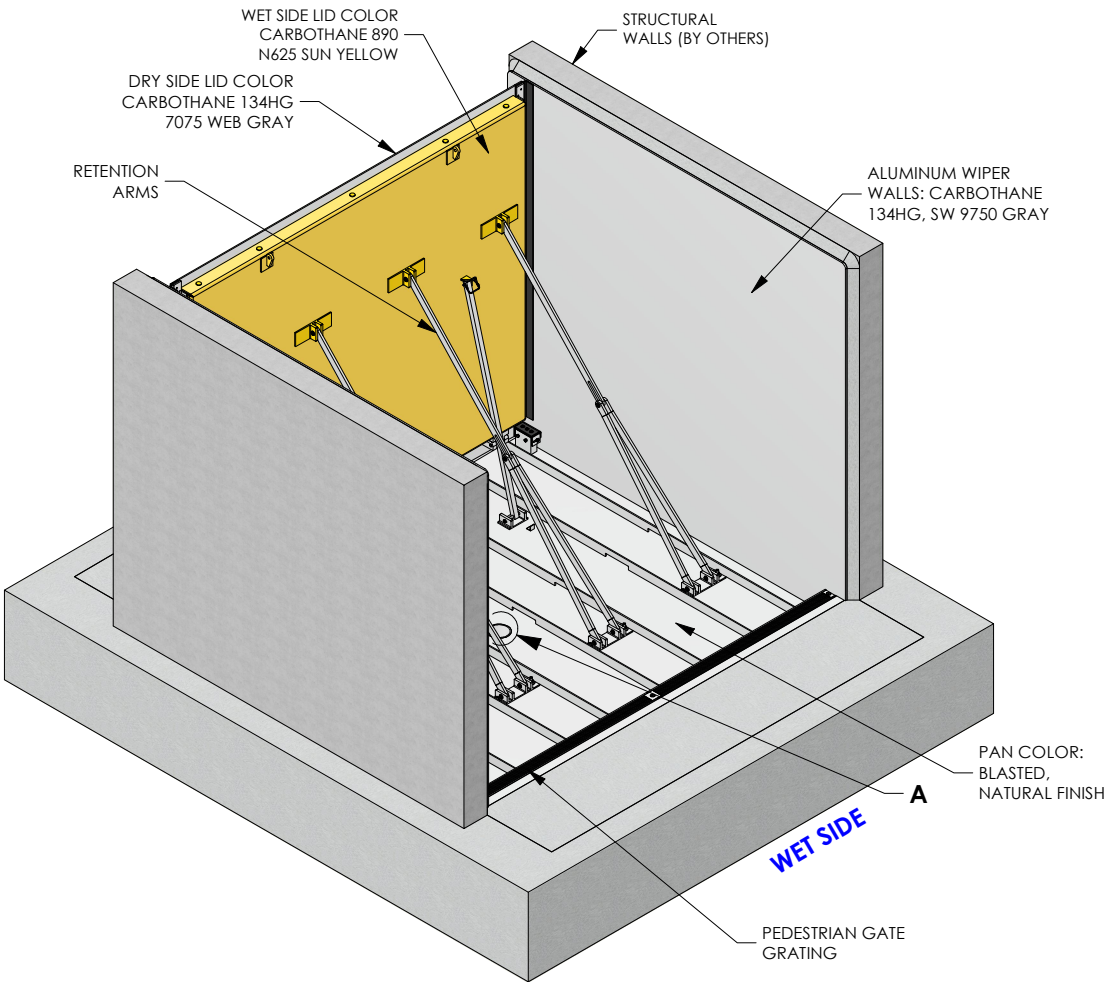


STRUCTURAL SPECIFICATIONS:

- 1. FLOODGATE MATERIAL TO BE ALUMINUM AS FOLLOWS:
 - SMOOTH ALUM SHEET/PLATE - GRADE 5052 MIN Fy=25.8 KSI AND GRADE 6061 MIN Fy=35 KSI
 - AL FLAT BARS, ANGLES, CHANNELS AND HINGES - GRADE 6061 MIN Fy=35 KSI
- 2. HINGE AND RETENTION PINS TO BE STAINLESS STEEL GRADE 304 Fy=50 KSI
- 3. BOLTS, FASTENERS AND ANCHORS TO BE STAINLESS STEEL GRADE 304 MIN Fy=30 KSI
- 4. ANCHOR BOLTS TO BE STAINLESS STEEL - GRADE 304 SET IN HILTI 200 INJECTABLE, TWO-COMPONENT, HYBRID ADHESIVE APPLIED PER HILTI SPECS
- 5. ALUMINUM TO BE WELDED WITH ALUMINUM WIRE - PER 4043 AWS A5.10
- 6. GROUT TO BE COMMERCIAL-GRADE NON-SHRINKING GROUT
- 7. ALL CONCRETE FOUNDATION POURS AND THEIR TIE-DOWNS TO EXISTING FOUNDATIONS SHOWN IN THESE DRAWINGS ARE FOR ILLUSTRATIVE PURPOSES ONLY. DESIGN OF THE CONCRETE FOUNDATION SLABS IS BY OTHERS. DESIGN AND SUPERVISION OF INSTALLATION OF RETENTION ARMS, ANCHOR BOLTS, AND GATE ANCHORS ARE BY FLOODBREAK. ALL CONCRETE TO BE 4000 PSI MINIMUM 28-DAY STRENGTH. REINFORCED IN EACH DIRECTION WITH ASTM A615 MIN Fy=60 KSI. SPECIAL ATTENTION SHALL BE TO PROPER SUPPORT OF RETENTION ARM ANCHOR BOLTS INTO THE SUPPORTING CONCRETE.
- 8. FLOODBREAK RECOMMENDS ALL ENCASING CONCRETE FILL TO BE MINIMUM 3500 PSI TO MEET HS-20/25 LOADING REQUIREMENTS. FINAL MIX DESIGN AND ANY REINFORCEMENT REQUIREMENTS SPECIFIED AND INSTALLED BY OTHERS.
- 9. ALL GASKET MATERIAL TO BE EPDM RUBBER.
- 10. WEIGHTS:
 - LID WEIGHT: 367.9 LBS
 - PAN WEIGHT: 493.8 LBS
 - TOTAL WEIGHT: 1396.1 LBS
- 11. SLOPE: NONE
- 12. FEDERAL, STATE AND OTHER LOCAL BUILDING CODES/REGULATIONS INCLUDING BUT NOT LIMITED TO ACCESSIBILITY CODES AND REGULATIONS MAY APPLY. COMPLIANCE TO ANY AND ALL CODES, REGULATIONS AND GUIDELINES ARE BY OTHERS.

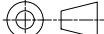


DETAIL A

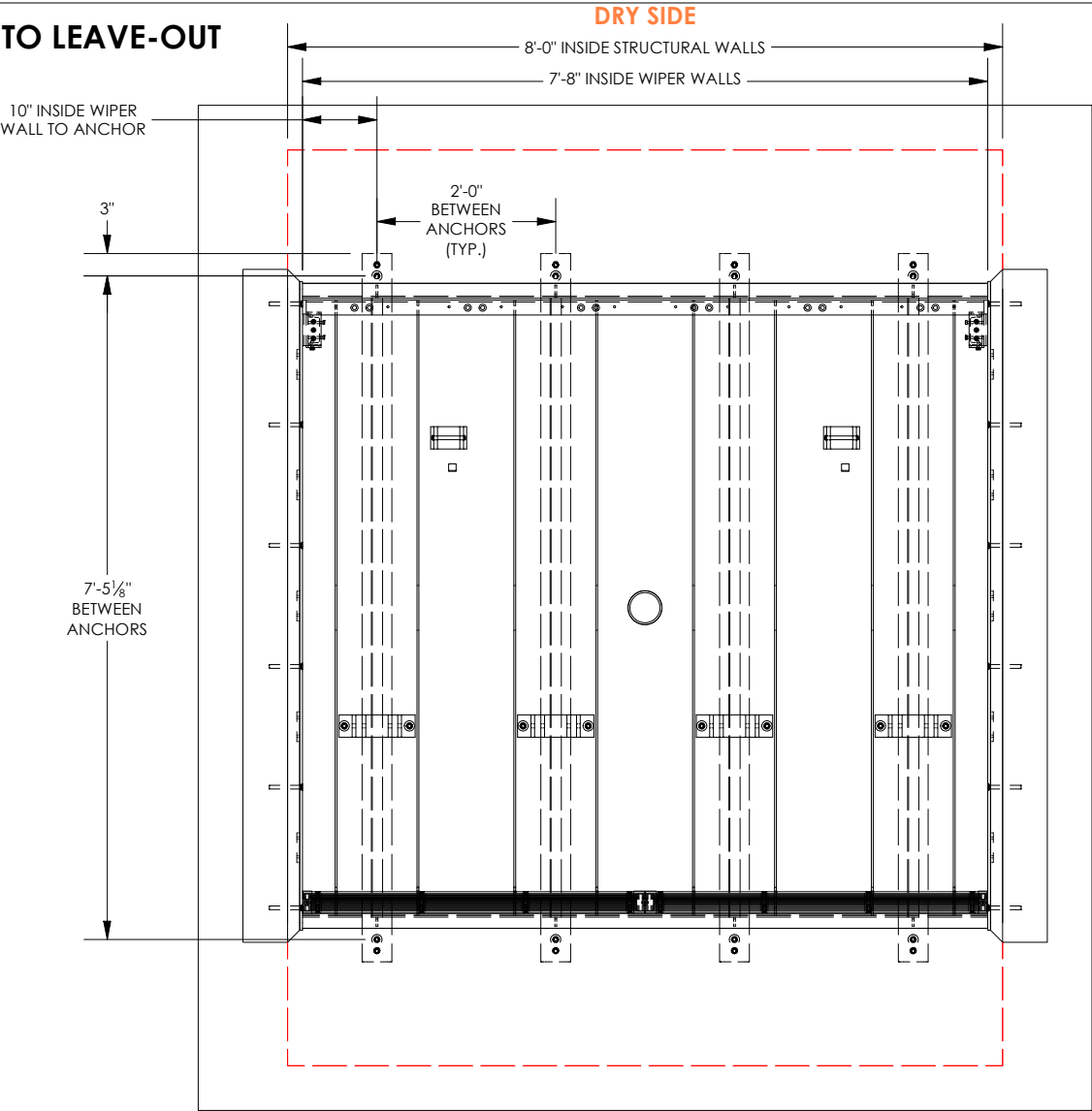
GENERAL ISOMETRIC VIEW

CONTRACTOR ACKNOWLEDGEMENT: _____

TYPICAL PEDESTRIAN GATE
NOTE: LAYOUT, SIZE, AND DETAIL ARE GATE-SPECIFIC

FINISH	SEE WO	CONTRACT	A-645-7		<div>FloodBreak</div> <div>REVOLUTIONARY FLOOD CONTROL</div> <div>http://floodbreak.com</div>			
SERIAL	01388	PRODUCT	PEDESTRIAN GATE					
THE INFORMATION CONTAINED IN THIS DRAWING IS THE SOLE INTELLECTUAL PROPERTY OF FLOODBREAK, LLC. , AND IS COVERED BY U.S. PATENTS AT PAT: HTTP://FLOODBREAK.COM/PATENTS/ AND PATENTS PENDING. ANY REPRODUCTION IN PART OR AS A WHOLE WITHOUT THE WRITTEN PERMISSION OF FLOODBREAK, LLC. IS PROHIBITED.			NAME	DATE	TITLE Example Drawing 7'-8" L x 6'-3" H			
		DRAWN	ALJ	3/22/2023				
		CHECKED	JB	3/22/2023				
		APPROVED	NE	3/22/2023				
DO NOT SCALE DRAWING					SHEET SIZE	DRAWING	REV	
					A	01388-PG01-00000-00	0	
					SCALE	N/A		SHEET
							1 OF 15	

PLAN VIEW RELATIVE TO LEAVE-OUT



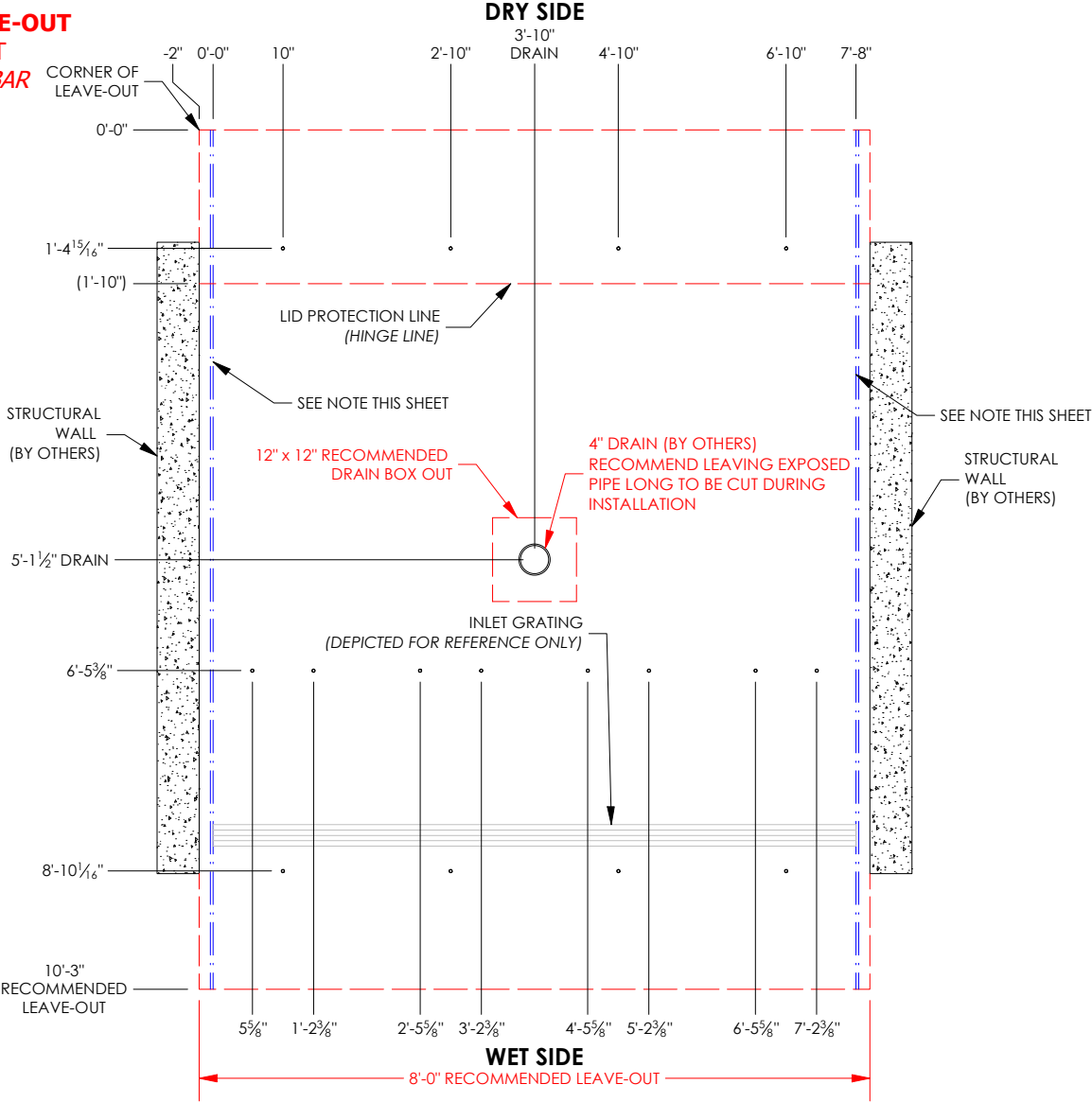
WET SIDE

CONTRACTOR ACKNOWLEDGEMENT: _____

FINISH	SEE WO	CONTRACT	A-645-7		<div>FloodBreak</div> <div>REVOLUTIONARY FLOOD CONTROL</div> <div>http://floodbreak.com</div>		
SERIAL	01388	PRODUCT	PEDESTRIAN GATE				
THE INFORMATION CONTAINED IN THIS DRAWING IS THE SOLE INTELLECTUAL PROPERTY OF FLOODBREAK, LLC. , AND IS COVERED BY U.S. PATENTS AT PAT: HTTP://FLOODBREAK.COM/PATENTS/ AND PATENTS PENDING. ANY REPRODUCTION IN PART OR AS A WHOLE WITHOUT THE WRITTEN PERMISSION OF FLOODBREAK, LLC. IS PROHIBITED.			NAME	DATE	TITLE Example Drawing 7'-8" L x 6'-3" H		
		DRAWN	ALJ	3/22/2023			
		CHECKED	JB	3/22/2023			
		APPROVED	NE	3/22/2023			
DO NOT SCALE DRAWING					SHEET SIZE	DRAWING	REV
					A	01388-PG01-00000-00	0
					SCALE		SHEET
					N/A		2 OF 15

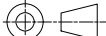
RECTANGLE REPRESENTS THE CONCRETE LEAVE-OUT PLAN VIEW

ANCHOR LOCATIONS IN CONCRETE LEAVE-OUT
PROVIDED TO AID IN REBAR PLACEMENT
ANCHORS MUST NOT CONTACT STEEL REBAR
OR ANY OTHER STEEL MEMBERS.

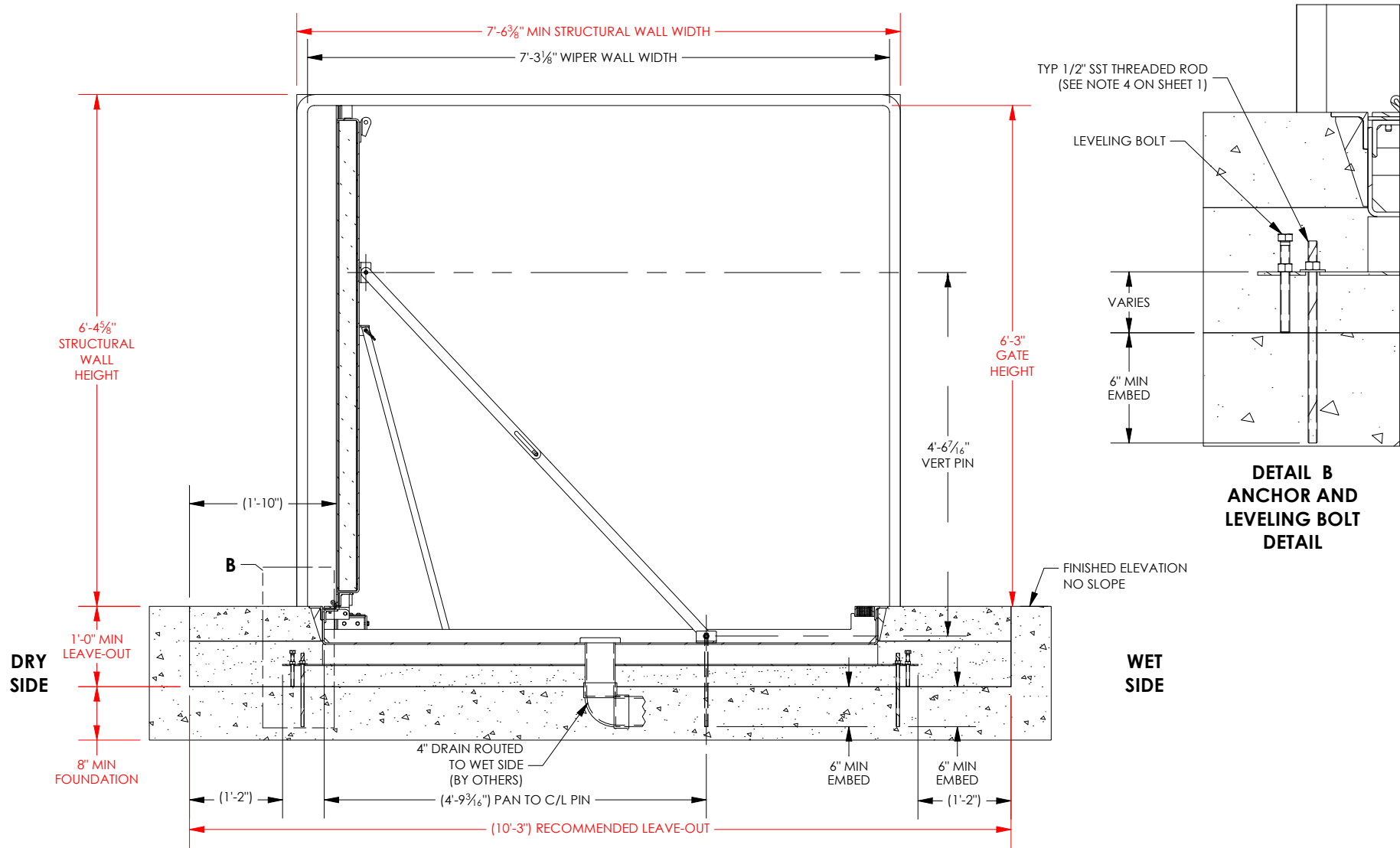


NOTE: EDGE OF BARRIER. SHOWN IN LEAVE OUT FOR REFERENCE ONLY.
ACTUAL PLACEMENT MAY VARY DEPENDENT UPON FIELD CONDITIONS

CONTRACTOR ACKNOWLEDGEMENT: _____

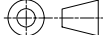
FINISH	SEE WO	CONTRACT	A-645-7		<div><h1>Flood Break</h1><h2>REVOLUTIONARY FLOOD CONTROL</h2><p>http://floodbreak.com</p><p>TITLE</p><p>Example Drawing 7'-8" L x 6'-3" H</p></div>		
SERIAL	01388	PRODUCT	PEDESTRIAN GATE				
THE INFORMATION CONTAINED IN THIS DRAWING IS THE SOLE INTELLECTUAL PROPERTY OF FLOODBREAK, LLC. , AND IS COVERED BY U.S. PATENTS AT PAT: HTTP://FLOODBREAK.COM/PATENTS/ AND PATENTS PENDING. ANY REPRODUCTION IN PART OR AS A WHOLE WITHOUT THE WRITTEN PERMISSION OF FLOODBREAK, LLC. IS PROHIBITED.			NAME	DATE			
		DRAWN	ALJ	3/22/2023			
		CHECKED	JB	3/22/2023			
		APPROVED	NE	3/22/2023			
DO NOT SCALE DRAWING					SHEET SIZE	DRAWING	REV
					A	01388-PG01-00000-00	0
					SCALE	SHEET	
					N/A		3 OF 15

TYPICAL CROSS-SECTION OF GATE ASSEMBLY

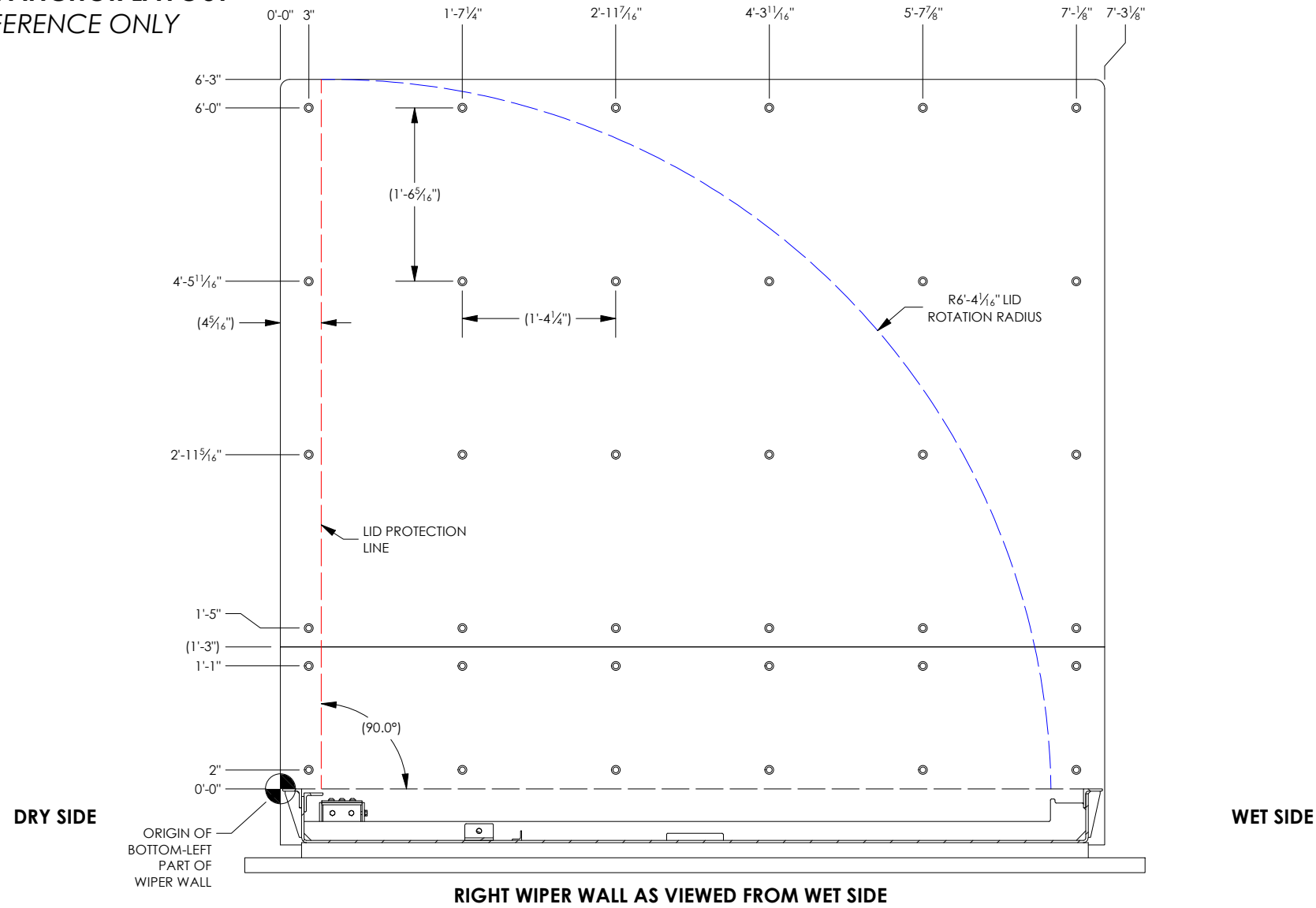


DETAIL B
ANCHOR AND
LEVELING BOLT
DETAIL

CONTRACTOR ACKNOWLEDGEMENT: _____

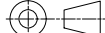
FINISH	SEE WO	CONTRACT	A-645-7		<div><div><div>FloodBreak</div><div>REVOLUTIONARY FLOOD CONTROL</div><div>http://floodbreak.com</div><div>Example Drawing 7'-8" L x 6'-3" H</div></div></div>			
SERIAL	01388	PRODUCT	PEDESTRIAN GATE					
THE INFORMATION CONTAINED IN THIS DRAWING IS THE SOLE INTELLECTUAL PROPERTY OF FLOODBREAK, LLC. , AND IS COVERED BY U.S. PATENTS AT PAT: HTTP://FLOODBREAK.COM/PATENTS/ AND PATENTS PENDING. ANY REPRODUCTION IN PART OR AS A WHOLE WITHOUT THE WRITTEN PERMISSION OF FLOODBREAK, LLC. IS PROHIBITED.			NAME	DATE	TITLE			
		DRAWN	ALJ	3/22/2023				
		CHECKED	JB	3/22/2023				
		APPROVED	NE	3/22/2023				
DO NOT SCALE DRAWING					SHEET SIZE		DRAWING	REV
					A	01388-PG01-00000-00		0
					SCALE			SHEET
					N/A			4 OF 15

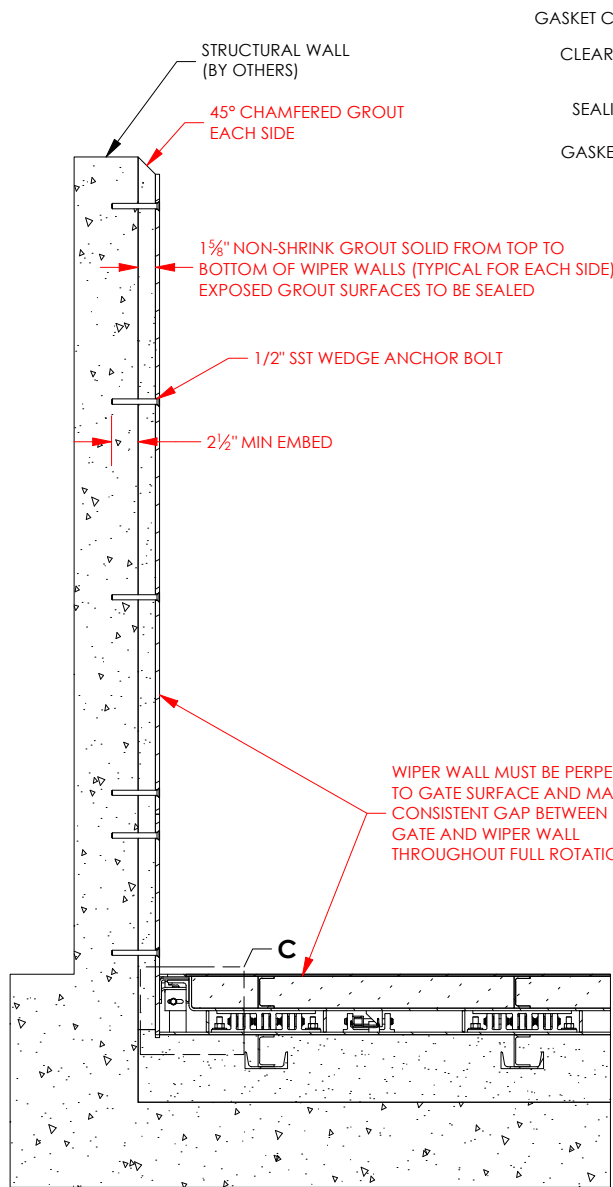
WIPER WALL ANCHOR LAYOUT
FOR REFERENCE ONLY



WIPER WALL ANCHOR LOCATIONS IN STRUCTURAL WALL
PROVIDED TO AID IN REBAR PLACEMENT
*ANCHORS MUST NOT CONTACT STEEL REBAR
OR ANY OTHER STEEL MEMBERS.*

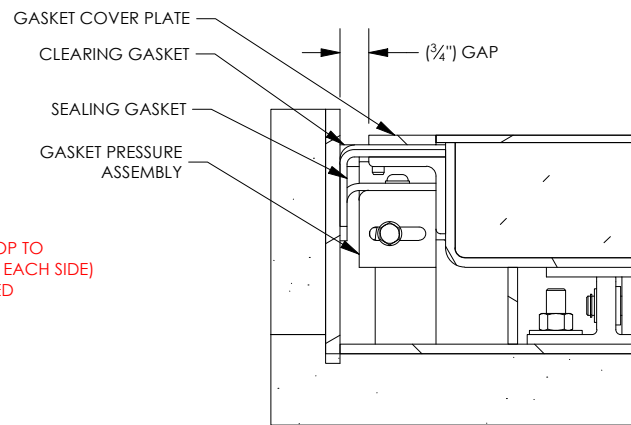
CONTRACTOR ACKNOWLEDGEMENT: _____

FINISH	SEE WO	CONTRACT	A-645-7		<div><div>FloodBreak</div><div>REVOLUTIONARY FLOOD CONTROL</div><div>http://floodbreak.com</div></div>			
SERIAL	01388	PRODUCT	PEDESTRIAN GATE					
THE INFORMATION CONTAINED IN THIS DRAWING IS THE SOLE INTELLECTUAL PROPERTY OF FLOODBREAK, LLC. , AND IS COVERED BY U.S. PATENTS AT PAT: HTTP://FLOODBREAK.COM/PATENTS/ AND PATENTS PENDING. ANY REPRODUCTION IN PART OR AS A WHOLE WITHOUT THE WRITTEN PERMISSION OF FLOODBREAK, LLC. IS PROHIBITED.			NAME	DATE	TITLE Example Drawing 7'-8" L x 6'-3" H			
		DRAWN	ALJ	3/22/2023				
		CHECKED	JB	3/22/2023				
		APPROVED	NE	3/22/2023				
DO NOT SCALE DRAWING					SHEET SIZE	DRAWING	REV	
					A	01388-PG01-00000-00	0	
					SCALE	N/A		SHEET
					5 OF 15			

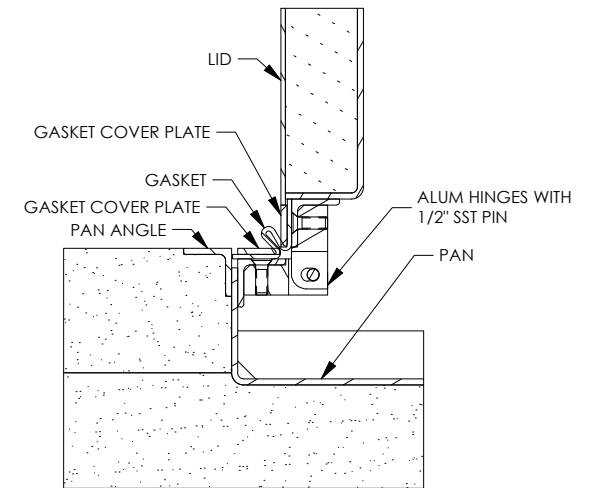


**LONGITUDINAL SECTION IN CLOSED POSITION
(VIEW FROM WET SIDE - CROPPED FOR CLARITY)**


CONTRACTOR ACKNOWLEDGEMENT: _____



**DETAIL C
LID GASKET DETAIL**



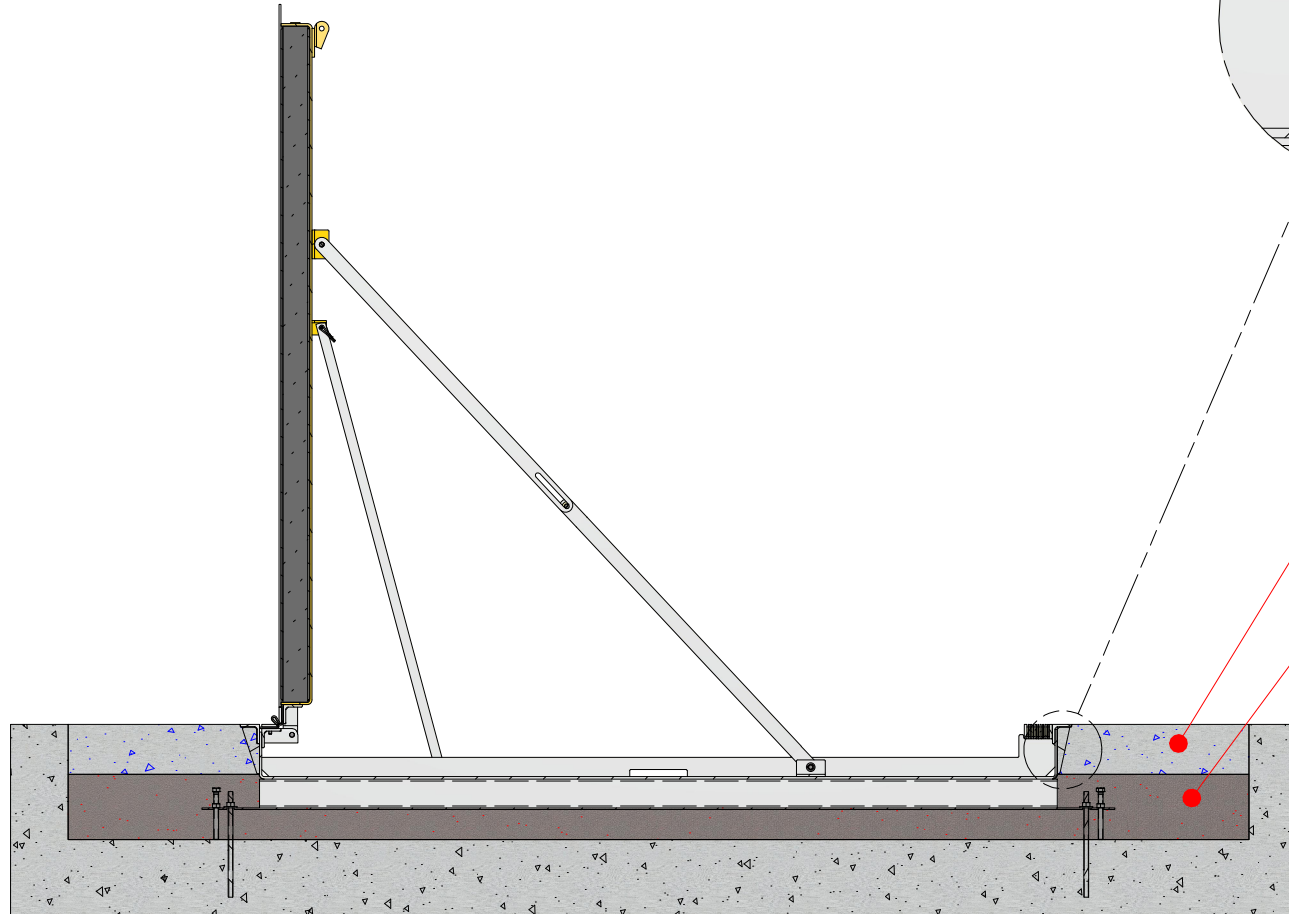
HINGE AND GASKET SECTION DETAIL

FINISH		SEE WO		CONTRACT		A-645-7		<div>FloodBreak</div> <div>REVOLUTIONARY FLOOD CONTROL</div> <div>http://floodbreak.com</div> <div>Example Drawing</div> <div>7'-8" L x 6'-3" H</div>			
SERIAL		01388		PRODUCT		PEDESTRIAN GATE					
<div>THE INFORMATION CONTAINED IN THIS DRAWING IS THE SOLE INTELLECTUAL PROPERTY OF FLOODBREAK, LLC., AND IS COVERED BY U.S. PATENTS AT PAT: HTTP://FLOODBREAK.COM/PATENTS/ AND PATENTS PENDING. ANY REPRODUCTION IN PART OR AS A WHOLE WITHOUT THE WRITTEN PERMISSION OF FLOODBREAK, LLC. IS PROHIBITED.</div>						NAME		DATE		<div>TITLE</div>	
						DRAWN		ALJ			
				CHECKED		JB		3/22/2023			
				APPROVED		NE		3/22/2023			
<div>DO NOT SCALE DRAWING</div>				SHEET SIZE		DRAWING				REV	
				A		01388-PG01-00000-00				0	
				SCALE		N/A				SHEET	
										6 OF 15	

ENCASEMENT POURING DETAILS

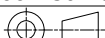
(NO VOIDS ALLOWED)

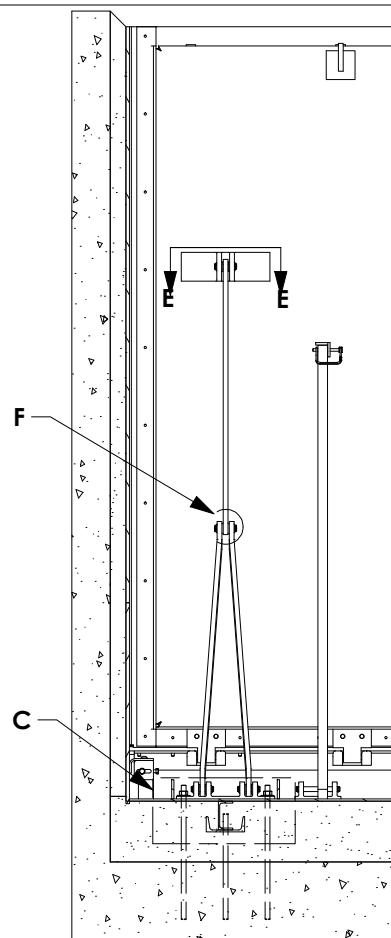
DRY
SIDE



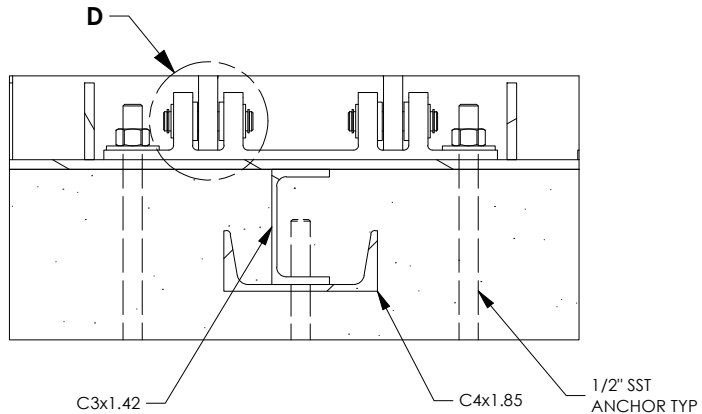
WET
SIDE

CONTRACTOR ACKNOWLEDGEMENT: _____

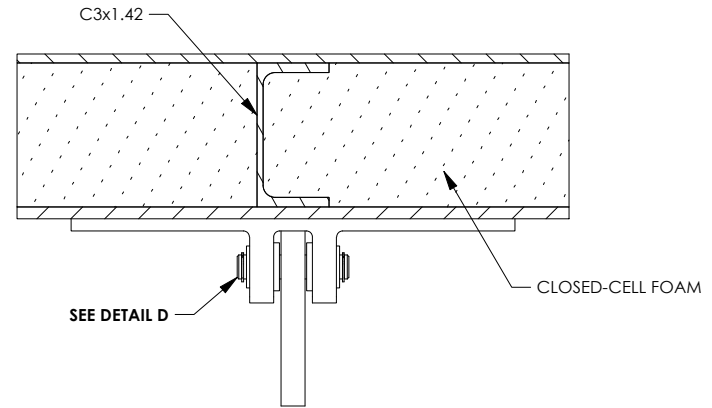
FINISH		SEE WO		CONTRACT		A-645-7		<div>FloodBreak</div> <div>REVOLUTIONARY FLOOD CONTROL</div> <div>http://floodbreak.com</div> <div>TITLE</div> <div>Example Drawing</div> <div>7'-8" L x 6'-3" H</div> <div><div><div>SHEET SIZE</div><div>A</div></div><div><div>DRAWING</div><div>01388-PG01-00000-00</div></div><div><div>REV</div><div>0</div></div><div><div>SCALE</div><div>N/A</div></div><div></div><div><div>SHEET</div><div>7 OF 15</div></div></div>			
SERIAL		01388		PRODUCT		PEDESTRIAN GATE					
<div>THE INFORMATION CONTAINED IN THIS DRAWING IS THE SOLE INTELLECTUAL PROPERTY OF FLOODBREAK, LLC., AND IS COVERED BY U.S. PATENTS AT PAT: HTTP://FLOODBREAK.COM/PATENTS/ AND PATENTS PENDING. ANY REPRODUCTION IN PART OR AS A WHOLE WITHOUT THE WRITTEN PERMISSION OF FLOODBREAK, LLC. IS PROHIBITED.</div> <div>DO NOT SCALE DRAWING</div>						NAME		DATE			
						DRAWN		ALJ		3/22/2023	
						CHECKED		JB		3/22/2023	
						APPROVED		NE		3/22/2023	



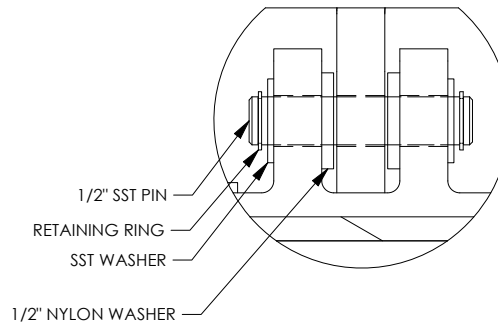
**GATE LONGITUDINAL SECTION OPEN
SECTION VIEW FROM WET SIDE**



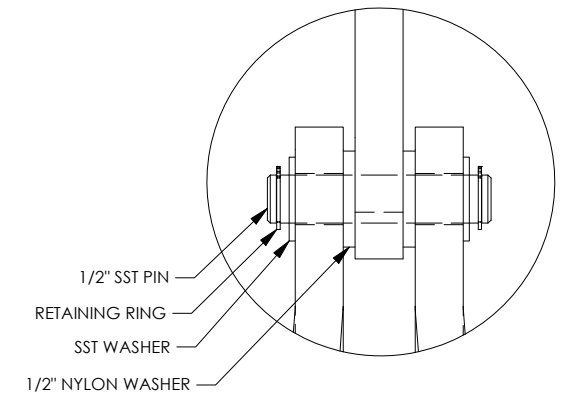
**DETAIL C
PAN DETAIL**



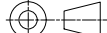
**SECTION E-E
LID DETAIL**



**DETAIL D
LID AND PAN
CONNECTION DETAIL**

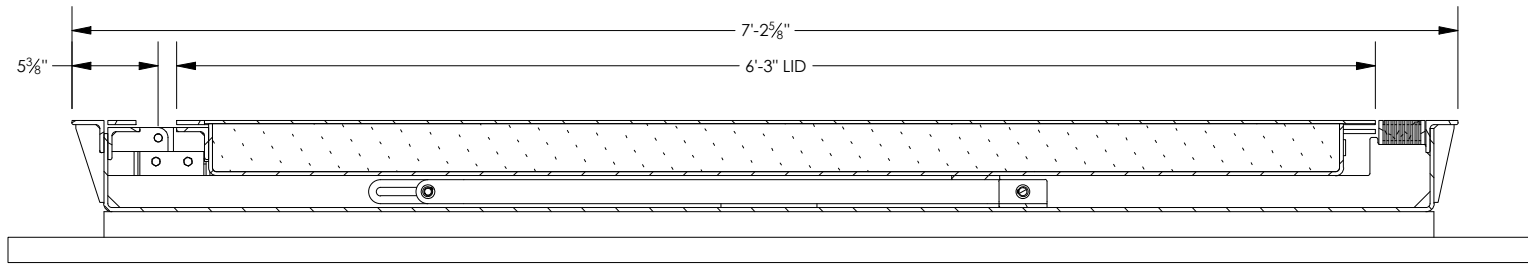


**DETAIL F
RETENTION CONNECTION
DETAIL**

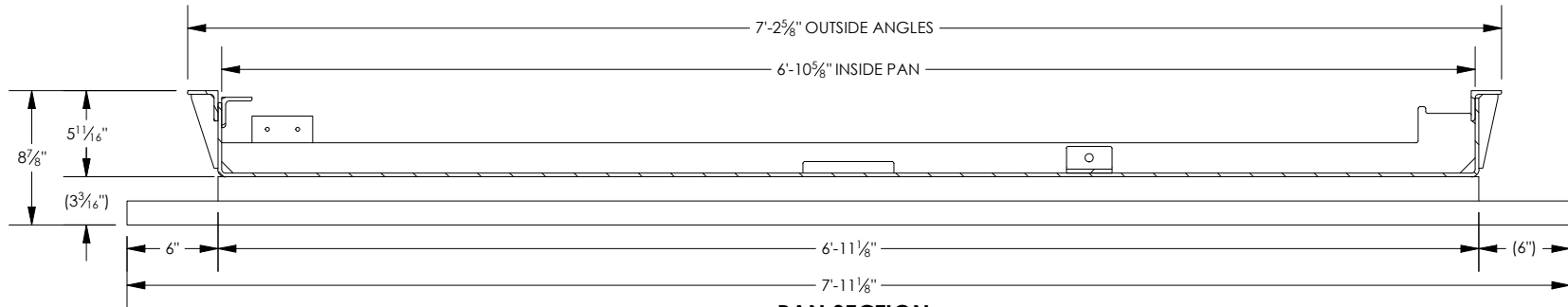
FINISH	SEE WO	CONTRACT	A-645-7		<div>FloodBreak</div> <div>REVOLUTIONARY FLOOD CONTROL</div> <div>http://floodbreak.com</div> <div>Example Drawing</div> <div>7'-8" L x 6'-3" H</div>		
SERIAL	01388	PRODUCT	PEDESTRIAN GATE				
<div>THE INFORMATION CONTAINED IN THIS DRAWING IS THE SOLE INTELLECTUAL PROPERTY OF FLOODBREAK, LLC., AND IS COVERED BY U.S. PATENTS AT PAT: HTTP://FLOODBREAK.COM/PATENTS/ AND PATENTS PENDING. ANY REPRODUCTION IN PART OR AS A WHOLE WITHOUT THE WRITTEN PERMISSION OF FLOODBREAK, LLC. IS PROHIBITED.</div>			NAME	DATE	TITLE		
		DRAWN	ALJ	3/22/2023	<div><div>SHEET SIZE</div><div>A</div><div>DRAWING</div><div>01388-PG01-00000-00</div><div>REV</div><div>0</div></div> <div><div>SCALE</div><div>N/A</div><div></div><div><div>SHEET</div><div>8 OF 15</div></div></div>		
		CHECKED	JB	3/22/2023			
		APPROVED	NE	3/22/2023			
<div>DO NOT SCALE DRAWING</div>							

DRY SIDE

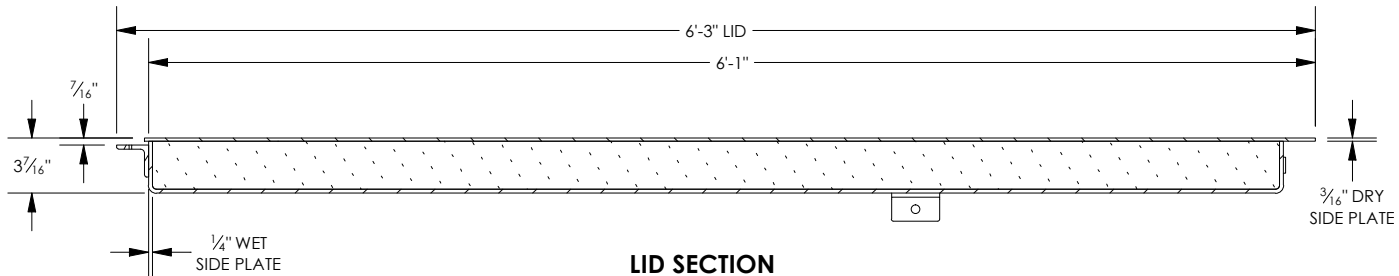
WET SIDE




LID AND PAN SECTION

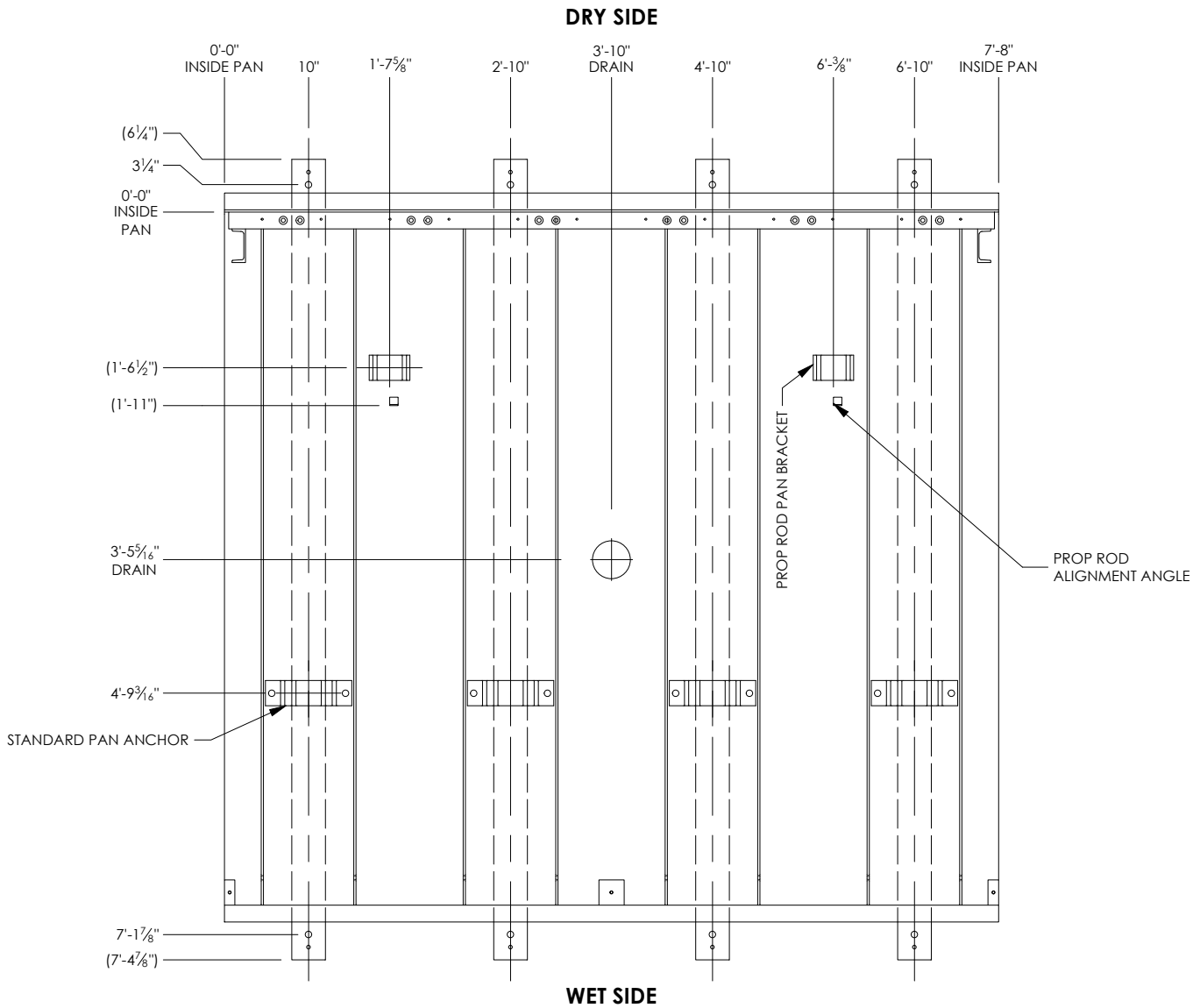


PAN SECTION

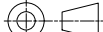


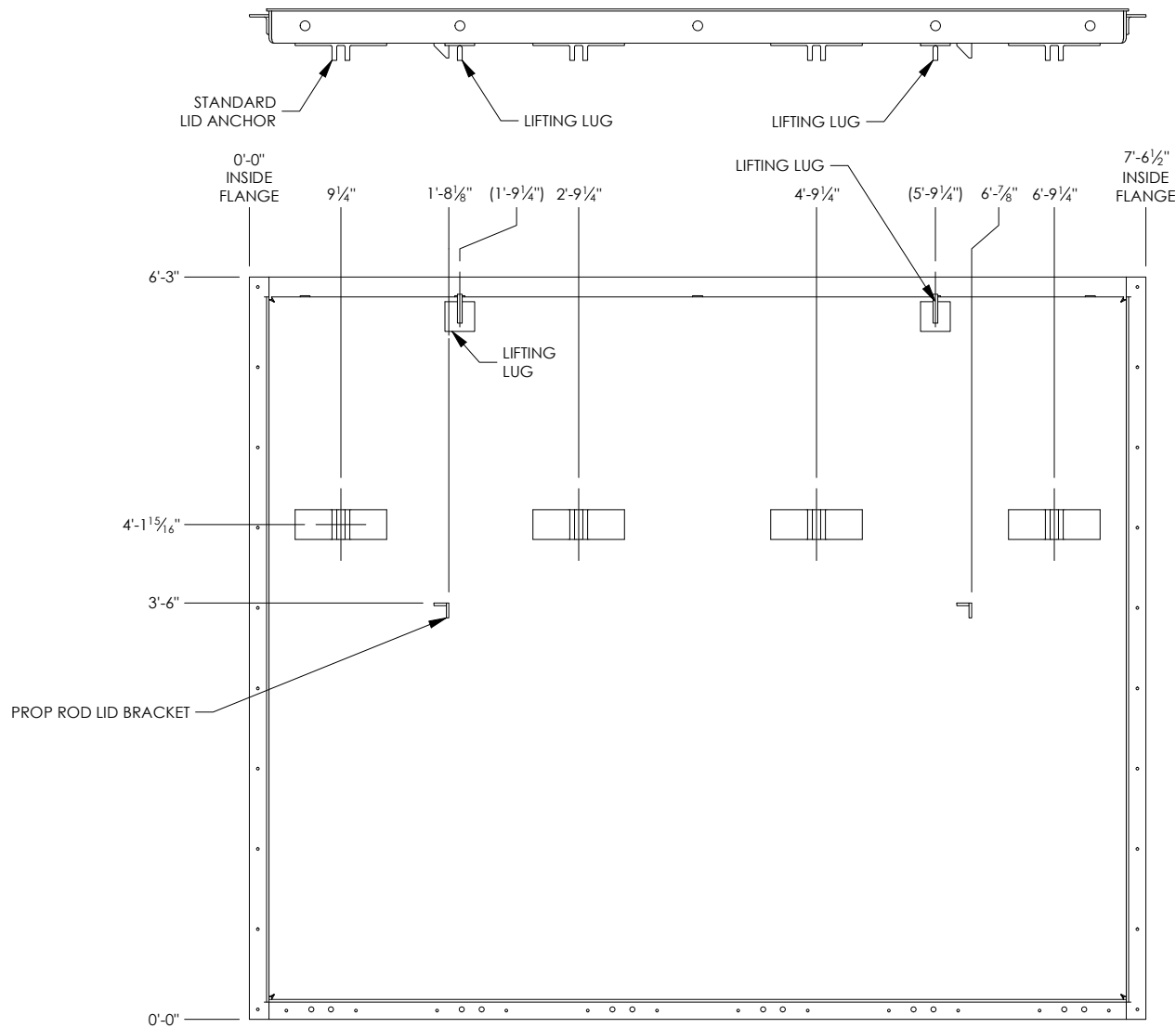
LID SECTION

FINISH	SEE WO	CONTRACT	A-645-7		<div>FloodBreak</div> <div>REVOLUTIONARY FLOOD CONTROL</div> <div>http://floodbreak.com</div>	
SERIAL	01388	PRODUCT	PEDESTRIAN GATE			
THE INFORMATION CONTAINED IN THIS DRAWING IS THE SOLE INTELLECTUAL PROPERTY OF FLOODBREAK, LLC. , AND IS COVERED BY U.S. PATENTS AT PAT: HTTP://FLOODBREAK.COM/PATENTS/ AND PATENTS PENDING. ANY REPRODUCTION IN PART OR AS A WHOLE WITHOUT THE WRITTEN PERMISSION OF FLOODBREAK, LLC. IS PROHIBITED.			NAME	DATE	TITLE Example Drawing 7'-8" L x 6'-3" H	
		DRAWN	ALJ	3/22/2023		
		CHECKED	JB	3/22/2023		
		APPROVED	NE	3/22/2023	<div>DO NOT SCALE DRAWING</div>	
		SHEET SIZE		DRAWING		
		A		01388-PG01-00000-00	0	
		SCALE		N/A		SHEET
					9 OF 15	

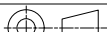


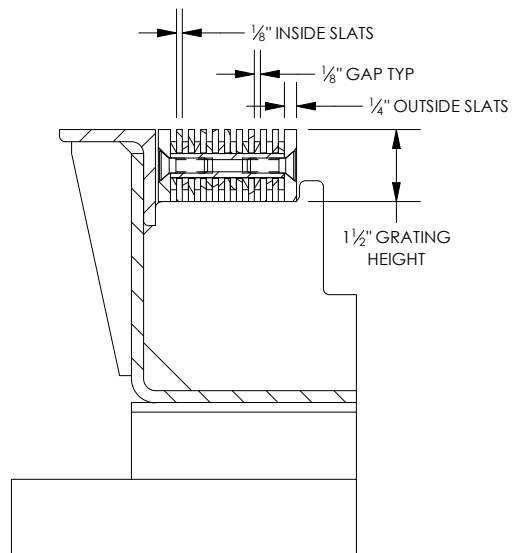
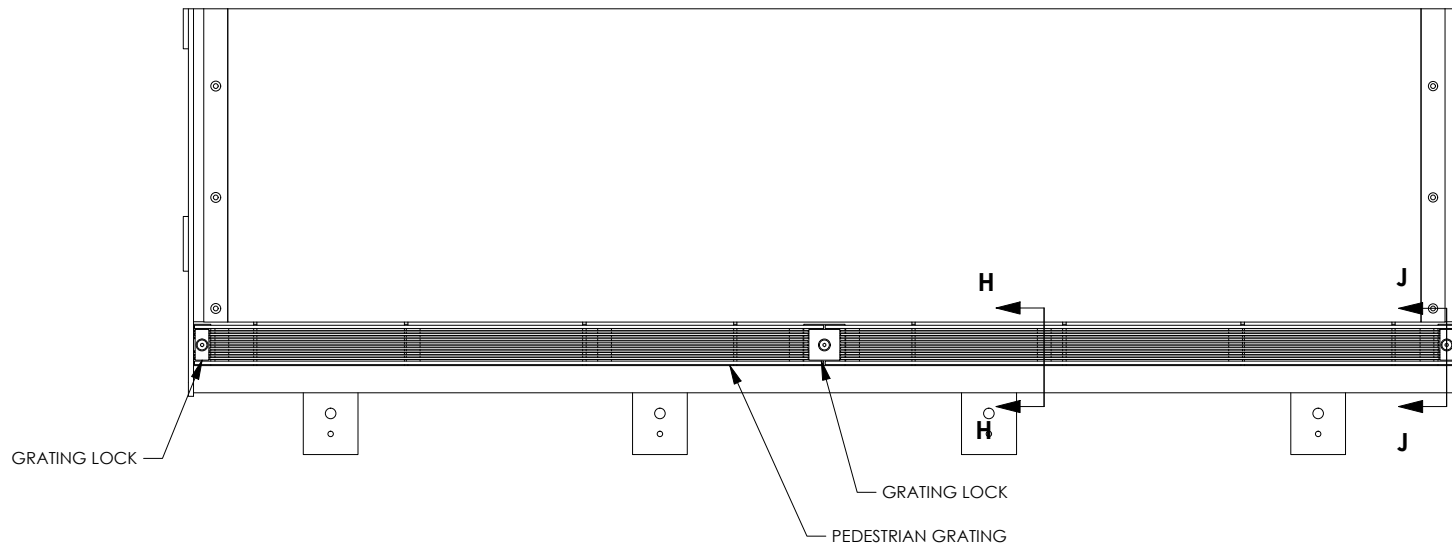
ASSEMBLED PAN AND ANCHOR LAYOUT

FINISH		SEE WO		CONTRACT		A-645-7		<div>FloodBreak</div> <div>REVOLUTIONARY FLOOD CONTROL</div> <div>http://floodbreak.com</div>							
SERIAL		01388		PRODUCT		PEDESTRIAN GATE									
<div>THE INFORMATION CONTAINED IN THIS DRAWING IS THE SOLE INTELLECTUAL PROPERTY OF FLOODBREAK, LLC., AND IS COVERED BY U.S. PATENTS AT PAT: HTTP://FLOODBREAK.COM/PATENTS/ AND PATENTS PENDING. ANY REPRODUCTION IN PART OR AS A WHOLE WITHOUT THE WRITTEN PERMISSION OF FLOODBREAK, LLC. IS PROHIBITED.</div> <div>DO NOT SCALE DRAWING</div>										NAME		DATE			
										DRAWN		ALJ		3/22/2023	
										CHECKED		JB		3/22/2023	
										APPROVED		NE		3/22/2023	
								TITLE		Example Drawing 7'-8" L x 6'-3" H					
SHEET SIZE				DRAWING				REV							
A				01388-PG01-00000-00				0							
SCALE				N/A											
								SHEET							
								10 OF 15							

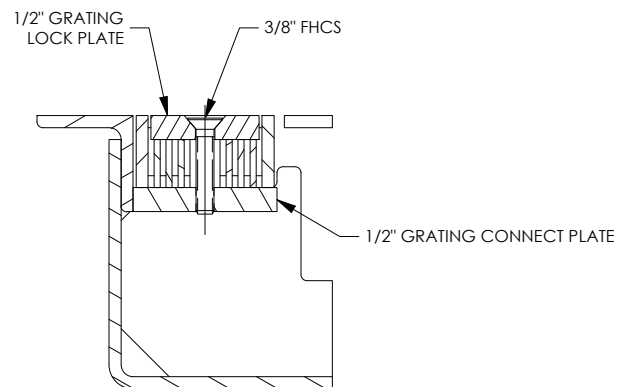


ASSEMBLED LID AND ANCHOR LAYOUT

FINISH		SEE WO		CONTRACT		A-645-7		<div>FloodBreak</div> <div>REVOLUTIONARY FLOOD CONTROL</div> <div>http://floodbreak.com</div> <div>TITLE</div> <div>Example Drawing</div> <div>7'-8" L x 6'-3" H</div>			
SERIAL		01388		PRODUCT		PEDESTRIAN GATE					
<div>THE INFORMATION CONTAINED IN THIS DRAWING IS THE SOLE INTELLECTUAL PROPERTY OF FLOODBREAK, LLC., AND IS COVERED BY U.S. PATENTS AT PAT: HTTP://FLOODBREAK.COM/PATENTS/ AND PATENTS PENDING. ANY REPRODUCTION IN PART OR AS A WHOLE WITHOUT THE WRITTEN PERMISSION OF FLOODBREAK, LLC. IS PROHIBITED.</div>					NAME	DATE		<div>SHEET SIZE</div> <div>A</div> <div>DRAWING</div> <div>01388-PG01-00000-00</div> <div>REV</div> <div>0</div>			
				DRAWN	ALJ	3/22/2023					
				CHECKED	JB	3/22/2023					
				APPROVED	NE	3/22/2023					
<div>DO NOT SCALE DRAWING</div>				<div>SCALE</div> <div>N/A</div>				<div></div> <div>SHEET</div> <div>11 OF 15</div>			

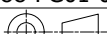


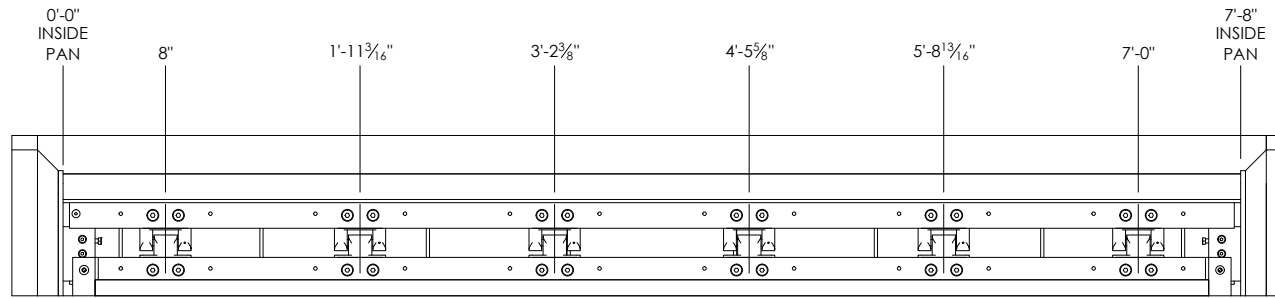
**SECTION H-H
GRATING DETAIL**



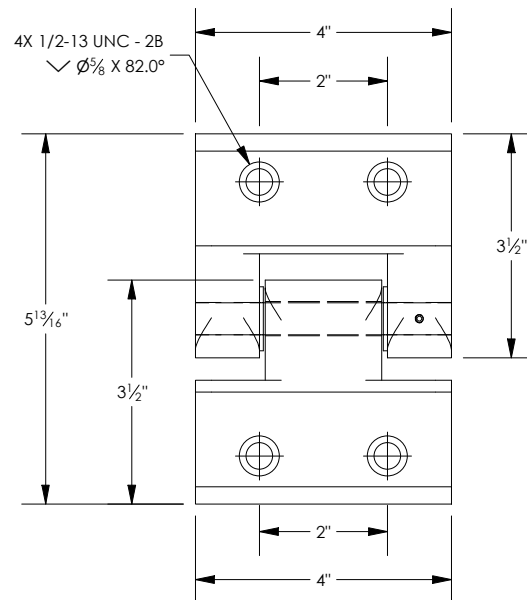
**SECTION J-J
GRATING LOCK DETAIL**

TYPICAL GRATING AND GRATING LOCK DETAILS

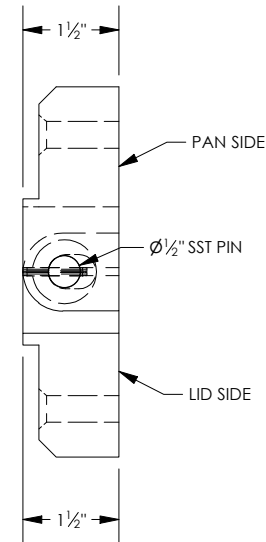
FINISH		SEE WO		CONTRACT		A-645-7		<div>FloodBreak</div> <div>REVOLUTIONARY FLOOD CONTROL</div> <div>http://floodbreak.com</div>					
SERIAL		01388		PRODUCT		PEDESTRIAN GATE							
<div>THE INFORMATION CONTAINED IN THIS DRAWING IS THE SOLE INTELLECTUAL PROPERTY OF FLOODBREAK, LLC., AND IS COVERED BY U.S. PATENTS AT PAT: HTTP://FLOODBREAK.COM/PATENTS/ AND PATENTS PENDING. ANY REPRODUCTION IN PART OR AS A WHOLE WITHOUT THE WRITTEN PERMISSION OF FLOODBREAK, LLC. IS PROHIBITED.</div> <div>DO NOT SCALE DRAWING</div>										NAME		DATE	
										DRAWN		ALJ	
								CHECKED		JB		3/22/2023	
								APPROVED		NE		3/22/2023	
								TITLE					
SHEET SIZE		DRAWING						REV					
A		01388-PG01-00000-00						0					
SCALE		N/A						SHEET					
								12 OF 15					

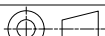


HINGE LAYOUT

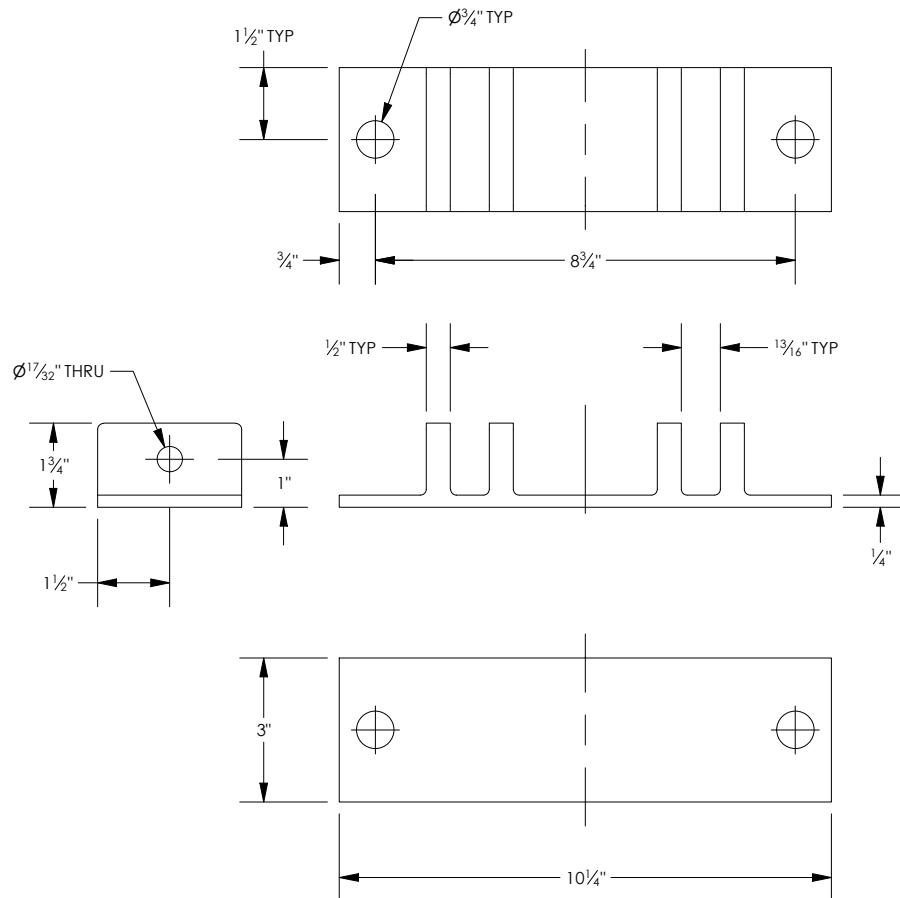


TYPICAL HINGE ASSY (6061 T6 ALUMINUM)

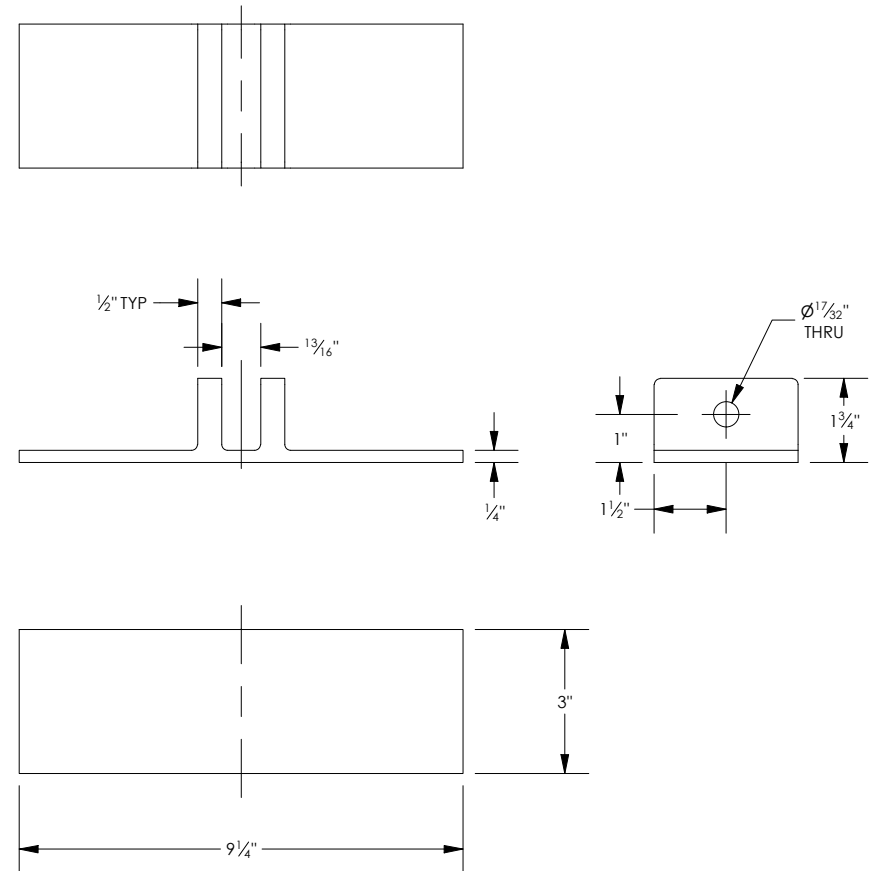


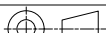
FINISH		SEE WO		CONTRACT		A-645-7		<div>FloodBreak</div> <div>REVOLUTIONARY FLOOD CONTROL</div> <div>http://floodbreak.com</div>							
SERIAL		01388		PRODUCT		PEDESTRIAN GATE									
<div>THE INFORMATION CONTAINED IN THIS DRAWING IS THE SOLE INTELLECTUAL PROPERTY OF FLOODBREAK, LLC., AND IS COVERED BY U.S. PATENTS AT PAT: HTTP://FLOODBREAK.COM/PATENTS/ AND PATENTS PENDING. ANY REPRODUCTION IN PART OR AS A WHOLE WITHOUT THE WRITTEN PERMISSION OF FLOODBREAK, LLC. IS PROHIBITED.</div>										NAME		DATE		<div>TITLE</div> <div>Example Drawing</div> <div>7'-8" L x 6'-3" H</div>	
										DRAWN		ALJ			
								CHECKED		JB		3/22/2023			
								APPROVED		NE		3/22/2023			
<div>DO NOT SCALE DRAWING</div>								SHEET SIZE		DRAWING				REV	
								A		01388-PG01-00000-00				0	
								SCALE		<div><div>N/A</div><div></div></div>				SHEET	
														13 OF 15	

STANDARD PAN ANCHOR

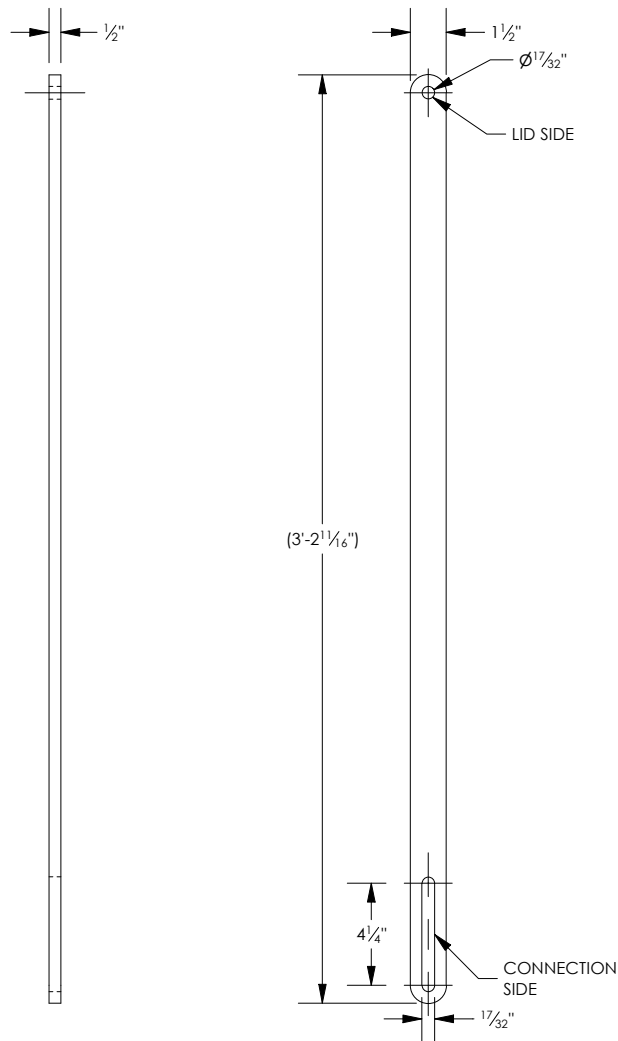


STANDARD LID ANCHOR

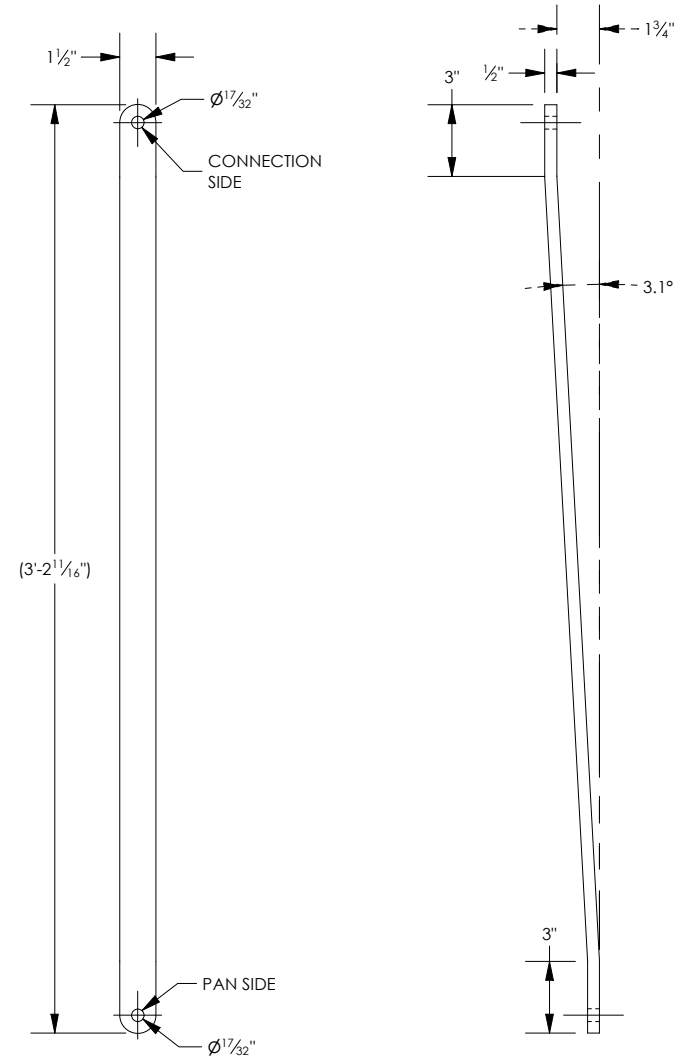



FINISH		SEE WO		CONTRACT		A-645-7		<div>Flood Break</div> <div>REVOLUTIONARY FLOOD CONTROL</div> <div>http://floodbreak.com</div> <div>TITLE</div> <div>Example Drawing</div> <div>7'-8" L x 6'-3" H</div>							
SERIAL		01388		PRODUCT		PEDESTRIAN GATE									
<div>THE INFORMATION CONTAINED IN THIS DRAWING IS THE SOLE INTELLECTUAL PROPERTY OF FLOODBREAK, LLC., AND IS COVERED BY U.S. PATENTS AT PAT: HTTP://FLOODBREAK.COM/PATENTS/ AND PATENTS PENDING. ANY REPRODUCTION IN PART OR AS A WHOLE WITHOUT THE WRITTEN PERMISSION OF FLOODBREAK, LLC. IS PROHIBITED.</div> <div>DO NOT SCALE DRAWING</div>										NAME		DATE		<div>SHEET SIZE</div> <div>A</div> <div>DRAWING</div> <div>01388-PG01-00000-00</div> <div>REV</div> <div>0</div>	
								DRAWN		ALJ		3/22/2023			
								CHECKED		JB		3/22/2023			
								APPROVED		NE		3/22/2023			
								SCALE		N/A				<div>SHEET</div> <div>14 OF 15</div>	

RETENTION ARM-UPPER



RETENTION ARM-LOWER



FINISH	SEE WO	CONTRACT	A-645-7		<div>FloodBreak</div> <div>REVOLUTIONARY FLOOD CONTROL</div> <div>http://floodbreak.com</div>		
SERIAL	01388	PRODUCT	PEDESTRIAN GATE				
THE INFORMATION CONTAINED IN THIS DRAWING IS THE SOLE INTELLECTUAL PROPERTY OF FLOODBREAK, LLC. , AND IS COVERED BY U.S. PATENTS AT PAT: HTTP://FLOODBREAK.COM/PATENTS/ AND PATENTS PENDING. ANY REPRODUCTION IN PART OR AS A WHOLE WITHOUT THE WRITTEN PERMISSION OF FLOODBREAK, LLC. IS PROHIBITED.			NAME	DATE	TITLE Example Drawing 7'-8" L x 6'-3" H		
		DRAWN	ALJ	3/22/2023			
		CHECKED	JB	3/22/2023			
		APPROVED	NE	3/22/2023			
DO NOT SCALE DRAWING					SHEET SIZE	DRAWING	REV
					A	01388-PG01-00000-00	0
					SCALE	<div></div>	SHEET
					N/A		15 OF 15