

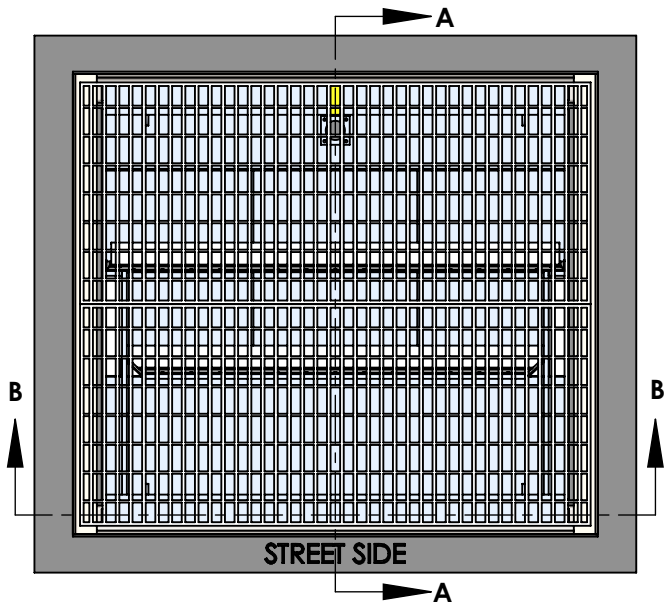
TYPICAL VERTICAL VENT SYSTEM

NOTES:

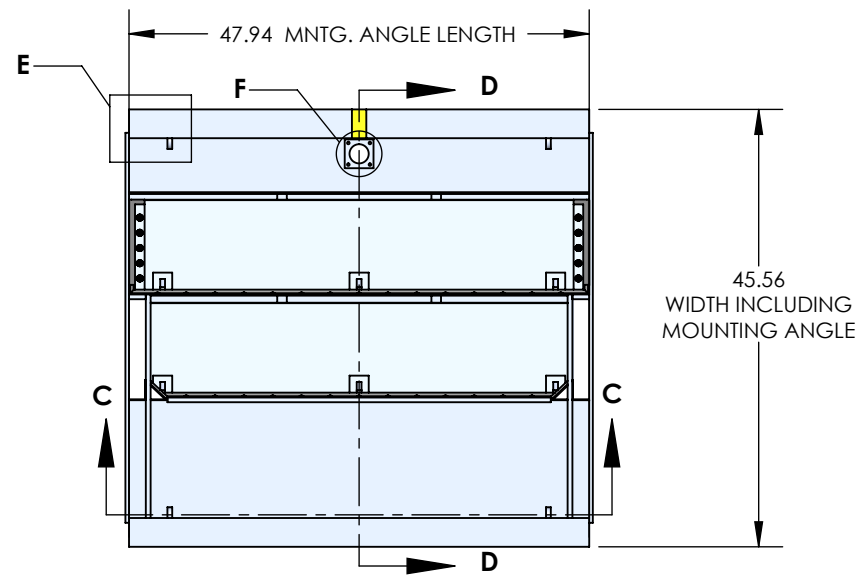
1. FLOODGATE MATERIALS:
 - ALL ALUMINUM SHEET AND PLATE GRADE 5052 MIN $F_y=25.8$ KSI
 - FLAT BARS, STRUCTURAL ANGLES, HINGES - ALUMINUM GRADE 6061 MIN $F_y=35$ KSI
2. ALL BOLTS TO BE STAINLESS STEEL - GRADE 304, MIN $F_y=90$ KSI.
3. ALUMINUM TO BE WELDED WITH ALUMINUM WIRE - ER 4043 AWS A5.10
4. ALL WELDS REQUIRED FOR STRUCTURAL STRENGTH OF THE GATES AND ENCLOSURE ARE CALLED OUT ON THESE DRAWINGS. ALL OTHER WELDING, NOT SHOWN OR CALLED OUT ON THESE DRAWINGS, ARE ESSENTIALLY NON-STRUCTURAL WELDS OR WELDS WITH NEGLIGIBLE LOADS AND RESULTING STRESSES. THESE WELDS ARE TO BE SELECTED BY THE FABRICATOR.
5. GATE GASKET(S) ARE EPDM RUBBER.
6. GATES ARE FILLED WITH HIGH DENSITY CLOSED CELL FOAM.
7. TOTAL WEIGHT: 332.89 LBS



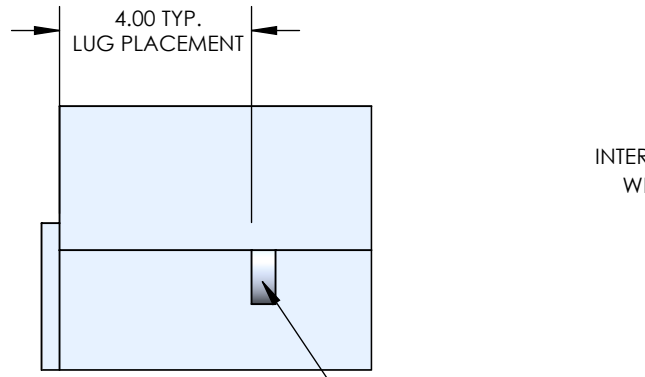
SCALE:	
DRAWN:	
CHECKED:	
APPROVED:	
SHEET 1 OF 9	



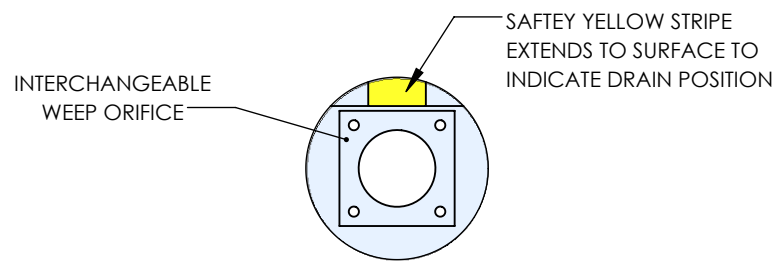
PLAN VIEW



PLAN VIEW
GRATE AND SHAFT HIDDEN FOR CLARITY



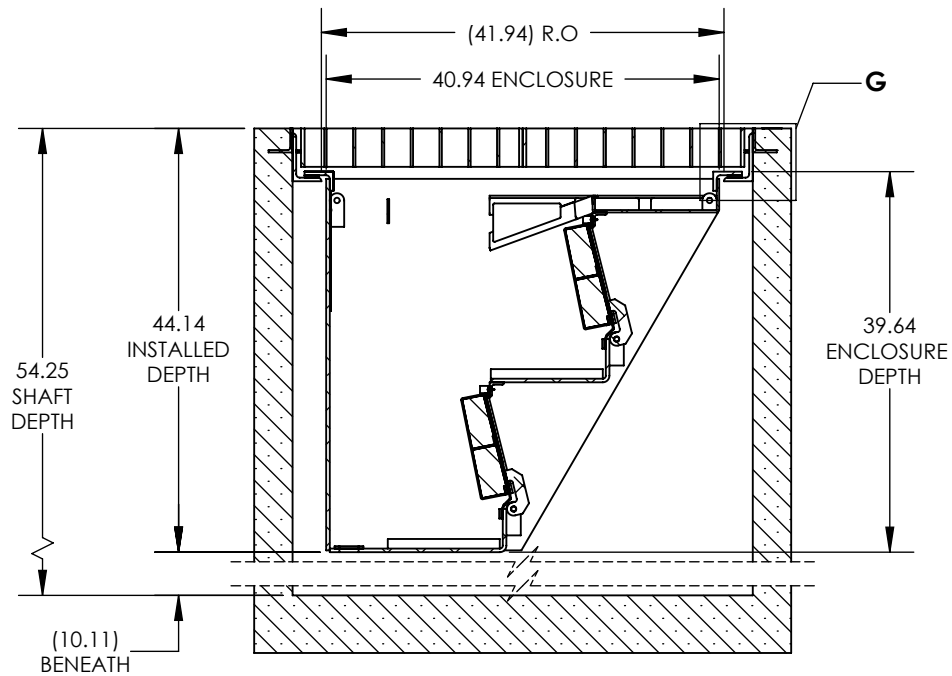
DETAIL E
SCALE 1 : 4



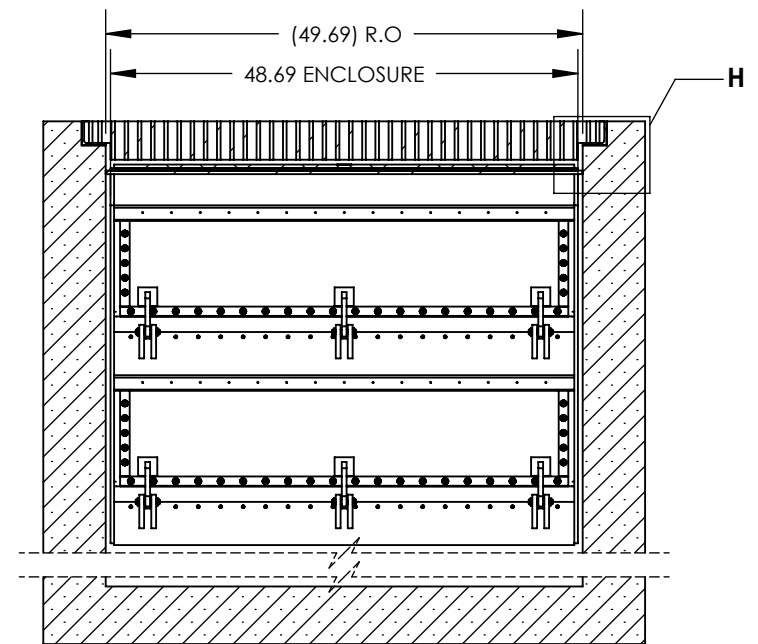
DETAIL F
SCALE 1 : 5



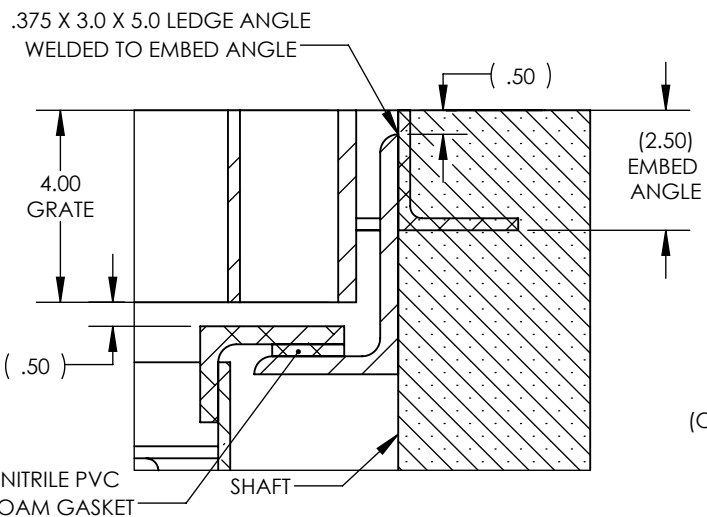
SCALE:	
DRAWN:	
CHECKED:	
APPROVED:	
SHEET 2 OF 9	



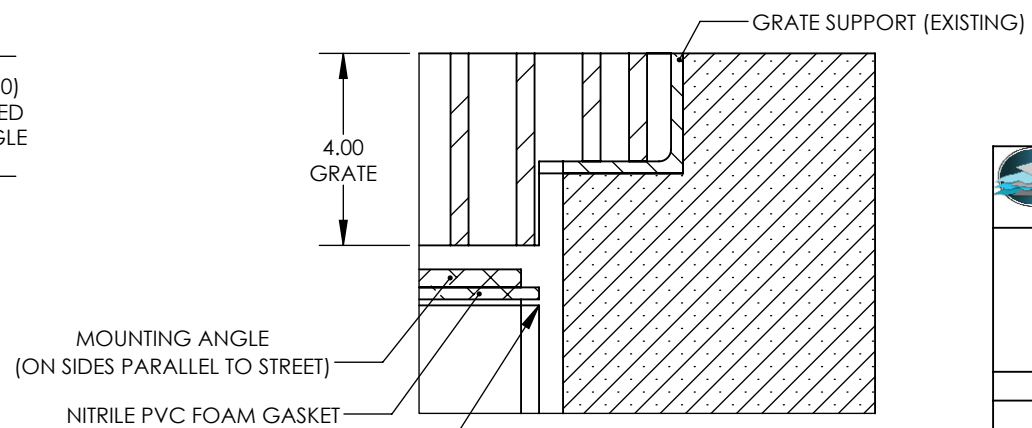
**SECTION A-A ROTATED 90°
SHOWN IN ACTIVATED STATE**



**SECTION B-B
SHOWN IN ACTIVATED STATE**



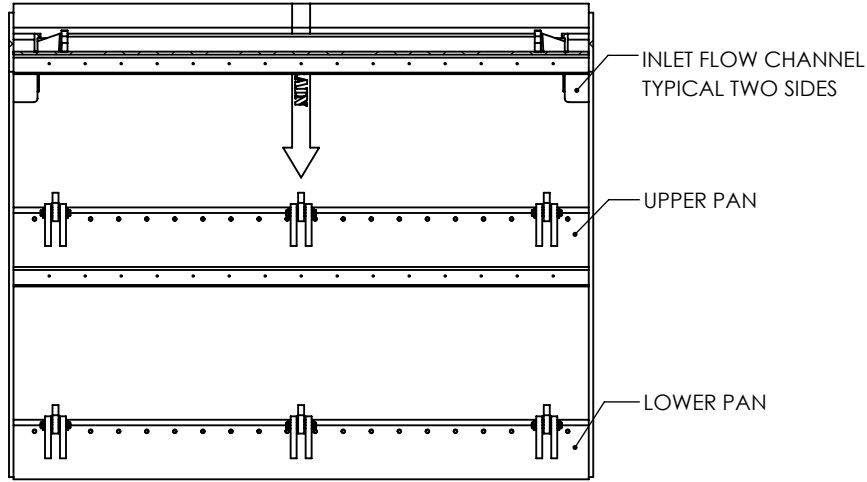
**DETAIL G
SCALE 1 : 4**



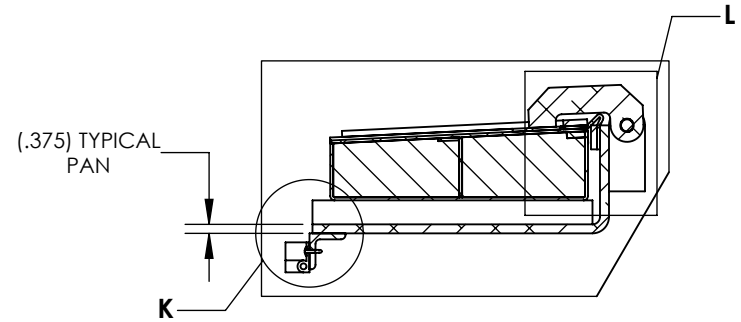
**DETAIL H
SCALE 1 : 4**



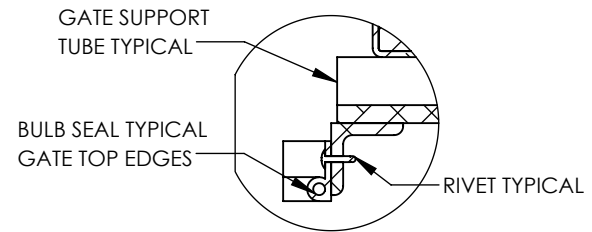
SCALE:	
DRAWN:	
CHECKED:	
APPROVED:	
SHEET 3 OF 9	



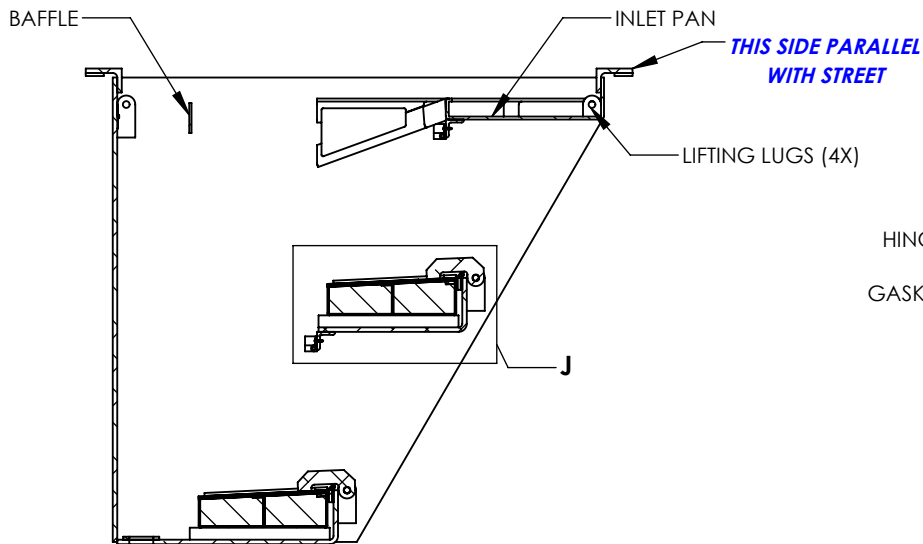
SECTION C-C



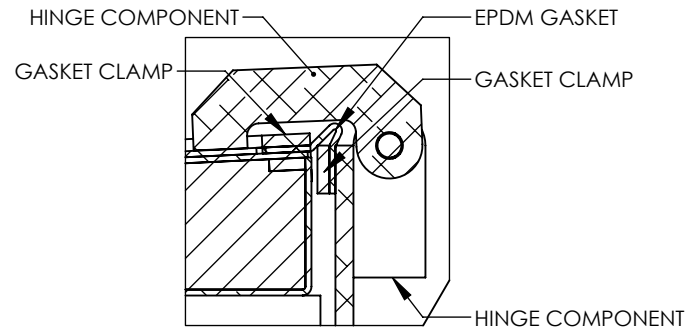
**DETAIL J
SCALE 1 : 8**



**DETAIL K
SCALE 1 : 4**



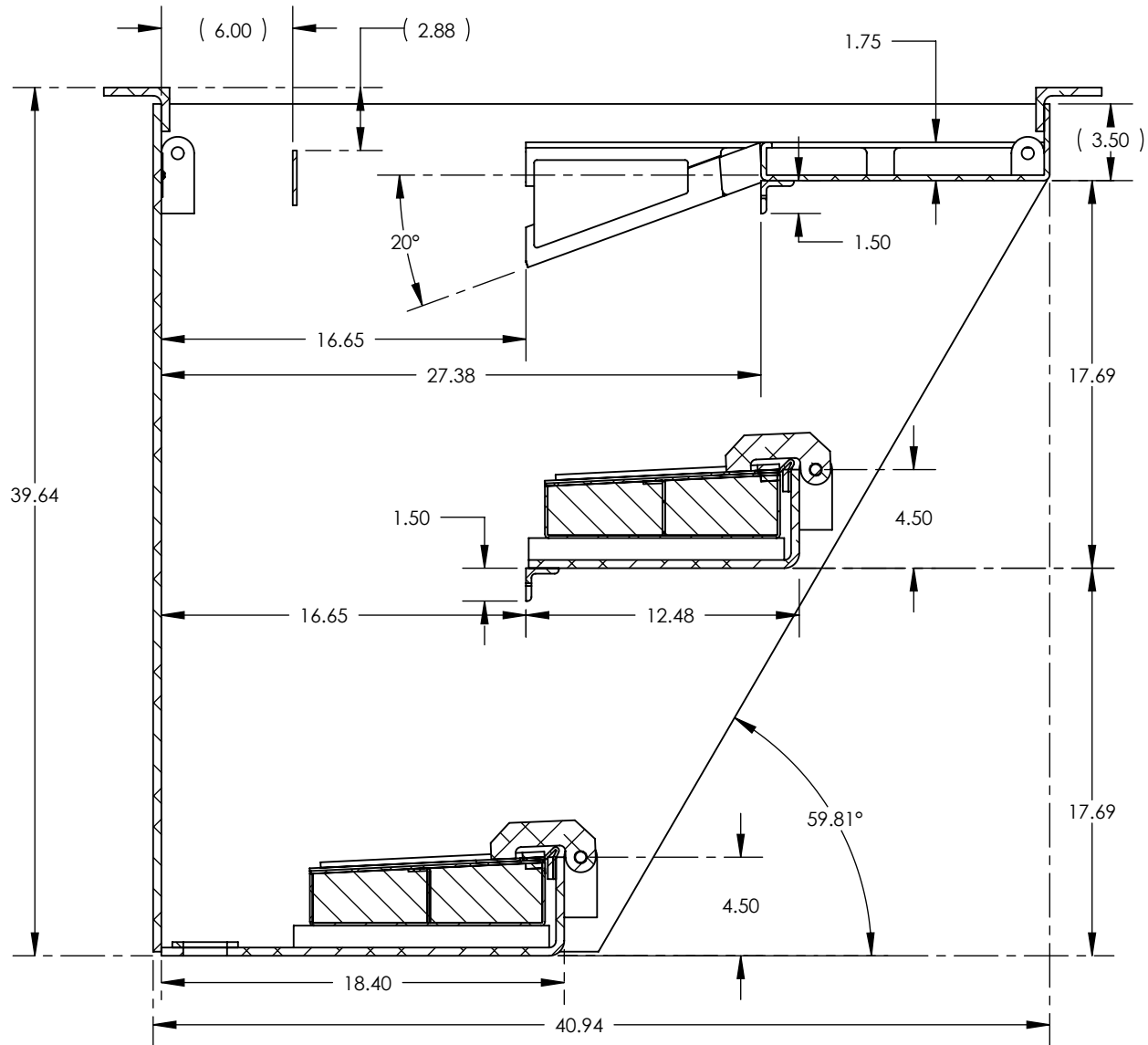
SECTION D-D



**DETAIL L
SCALE 1 : 4**



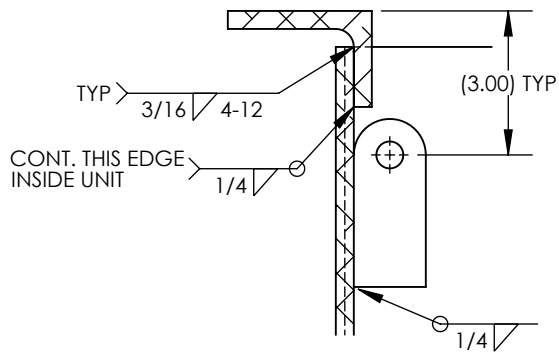
SCALE:	
DRAWN:	
CHECKED:	
APPROVED:	
SHEET 4 OF 9	



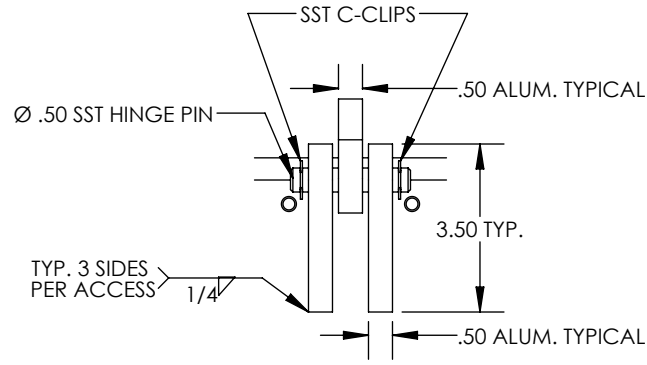
**SECTION D-D CONTINUED
BULB GASKET REMOVED FOR CLARITY**



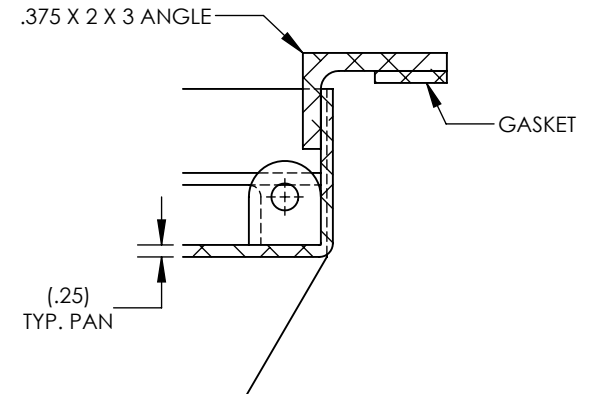
SCALE:	
DRAWN:	
CHECKED:	
APPROVED:	
SHEET 5 OF 9	



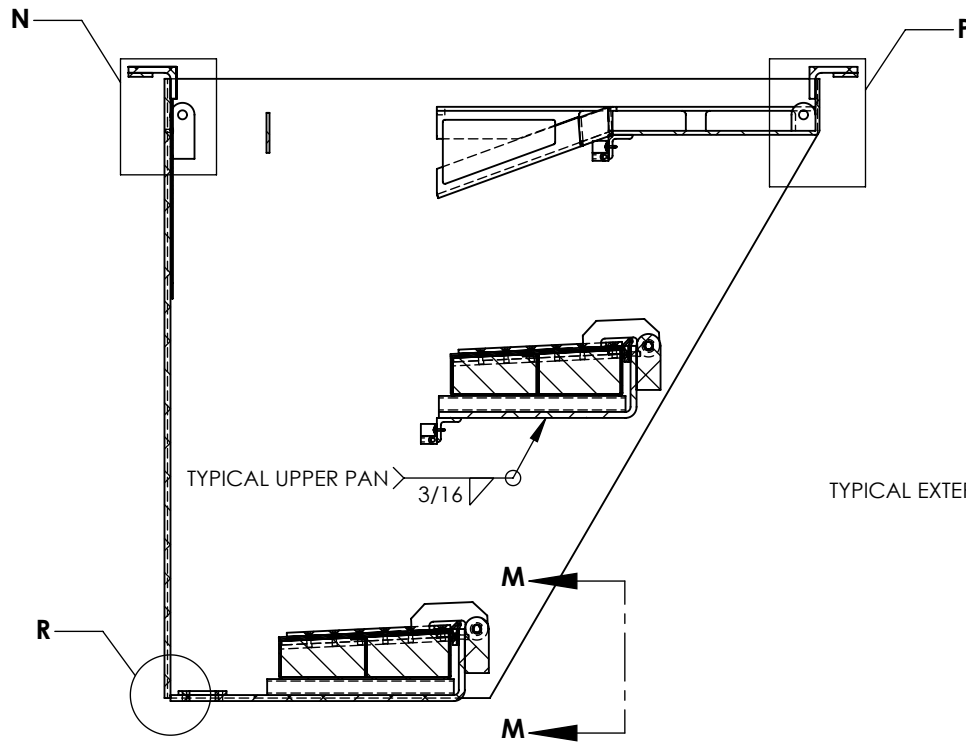
DETAIL N
SCALE 1 : 4



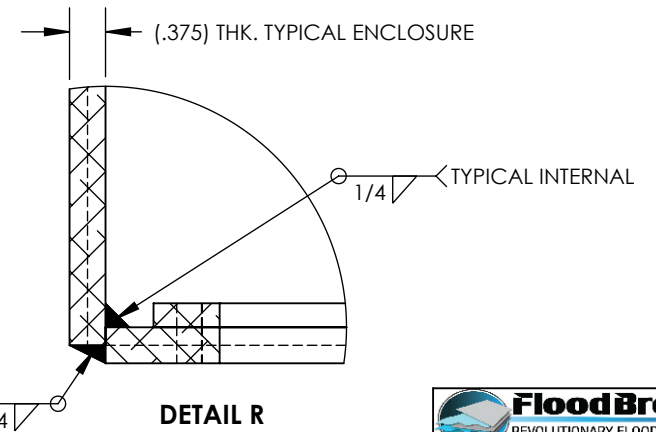
SECTION M-M
SCALE 1 : 4



DETAIL P
SCALE 1 : 4



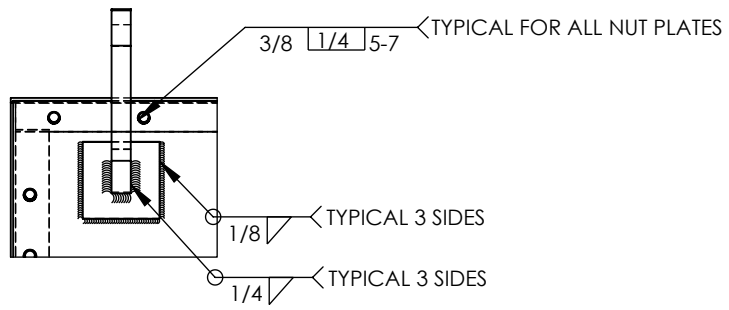
TYPICAL CROSS SECTION



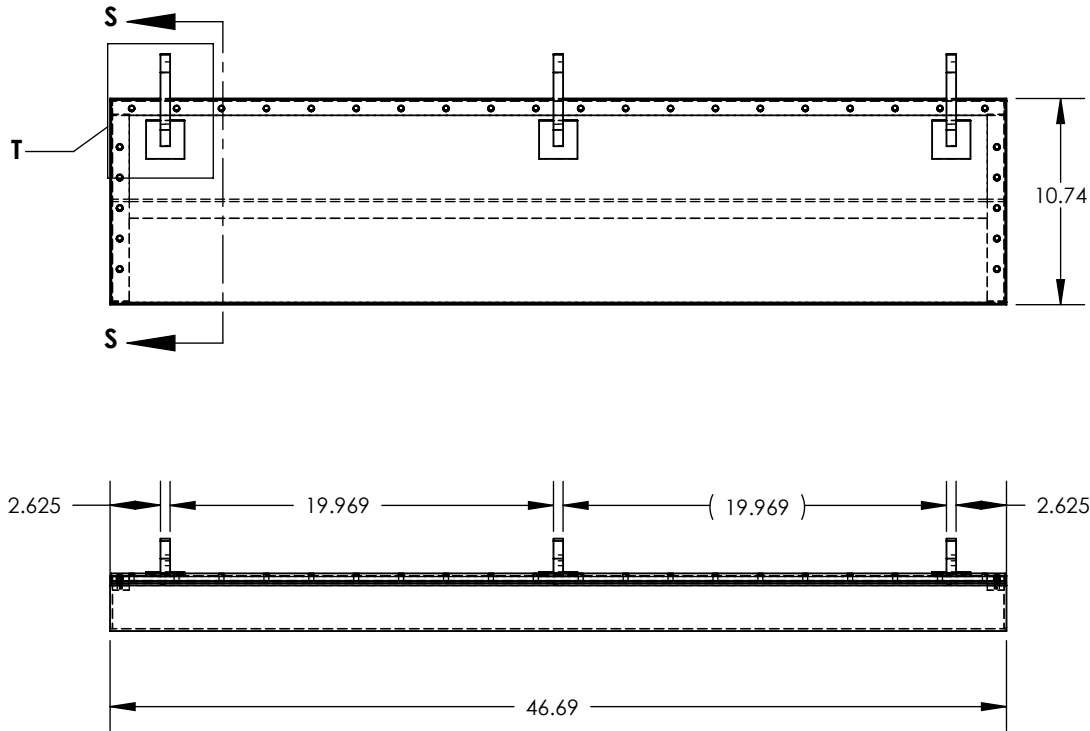
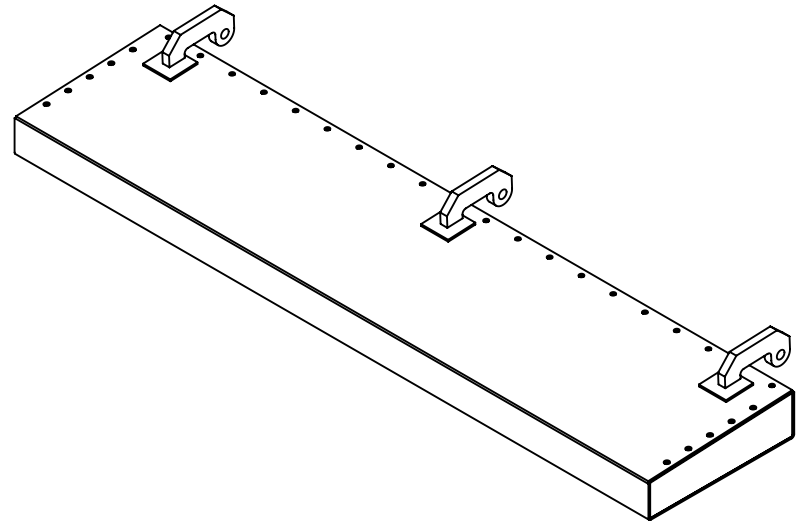
DETAIL R
SCALE 1 : 2



SCALE:	
DRAWN:	
CHECKED:	
APPROVED:	
SHEET 6 OF 9	



DETAIL T
SCALE 1 : 5

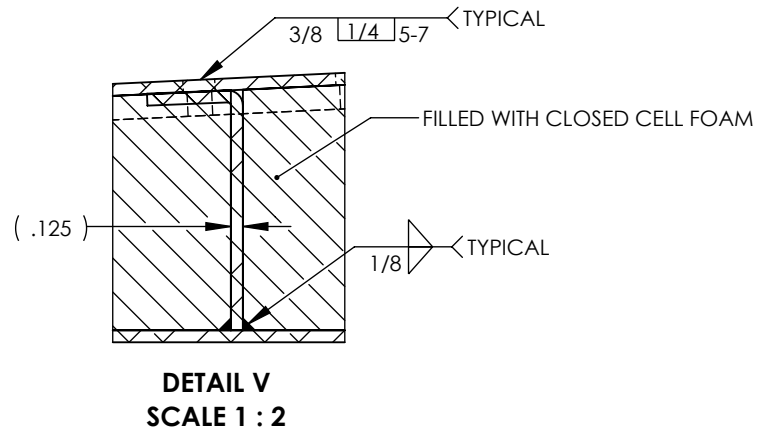
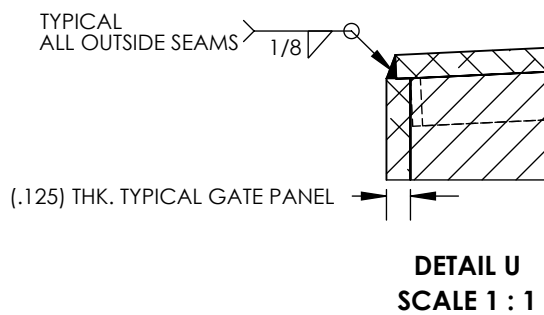
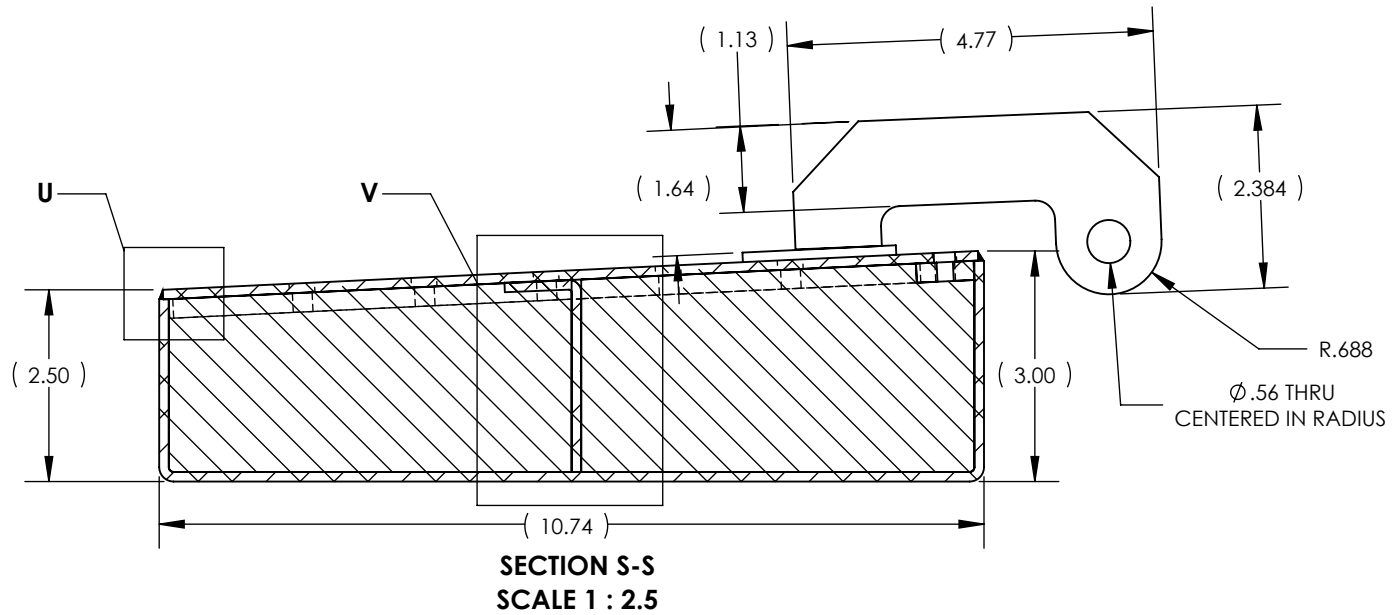


GATE FAB DETAILS

FloodBreak
REVOLUTIONARY FLOOD CONTROL
<http://www.floodbreak.com>

SCALE:	
DRAWN:	
CHECKED:	
APPROVED:	
SHEET 7 OF 9	

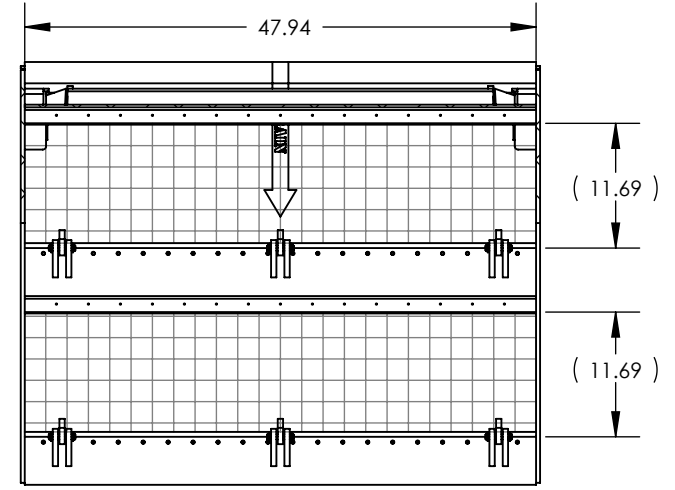
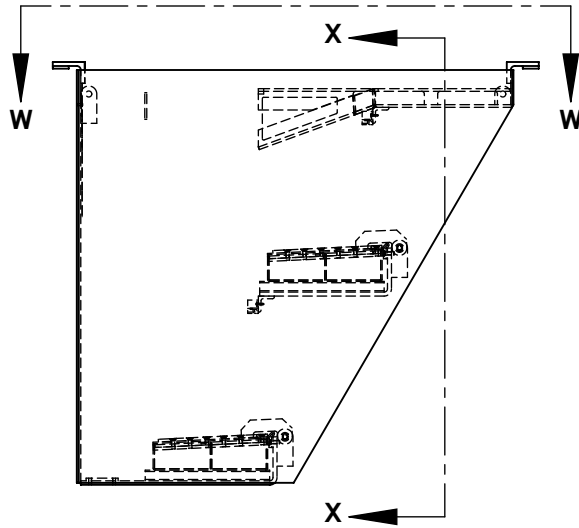
GATE FAB DETAILS



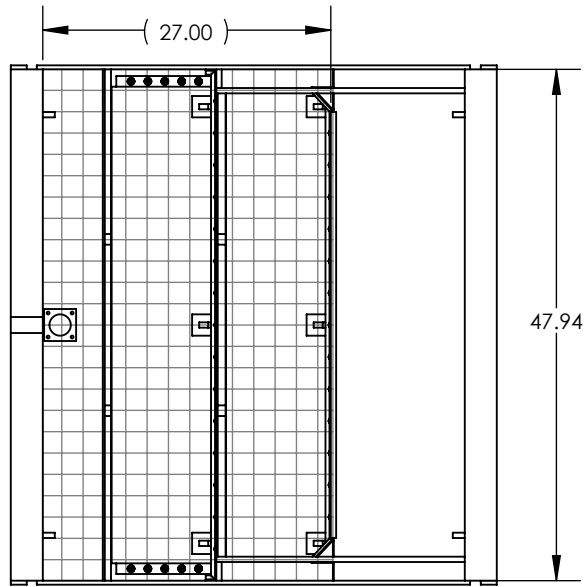
SCALE:	
DRAWN:	
CHECKED:	
APPROVED:	
SHEET 8 OF 9	

AIRFLOW DETAILS

UNPROTECTED SHAFT OPENING AREA: 2084 IN SQ.
 AIRFLOW THROUGH VVS @ SECT. X-X: 1121 IN SQ.
 AIRFLOW THROUGH VVS @ SECT. W-W: 1294 IN SQ.



SECTION X-X



SECTION W-W



SCALE:	
DRAWN:	
CHECKED:	
APPROVED:	
SHEET 9 OF 9	